



AZIMUT

# AZIMUT EXPLORATION INC.

## Predictive Modelling That Works

AZM:TSX-V



### URANIUM

1. North Rae
2. Daniel Lake
3. Kangiq
4. Burrel Lake
5. South Rae
6. Vernot Lake
7. North Minto
8. Central Minto
9. South Minto
10. West Minto
11. Hudson Bay
12. South Bienville
13. Kativik



### GOLD

1. Opinaca A
2. Opinaca B
3. Eleonore South
4. Opinaca D
5. Wabamisk



### REE-Cu(GOLD)

1. Rex
2. Rex South
3. Diana



### CHROMIUM-PGE

1. Eastmain West

Cu = copper  
 REE = rare earth elements  
 PGE = platinum group elements

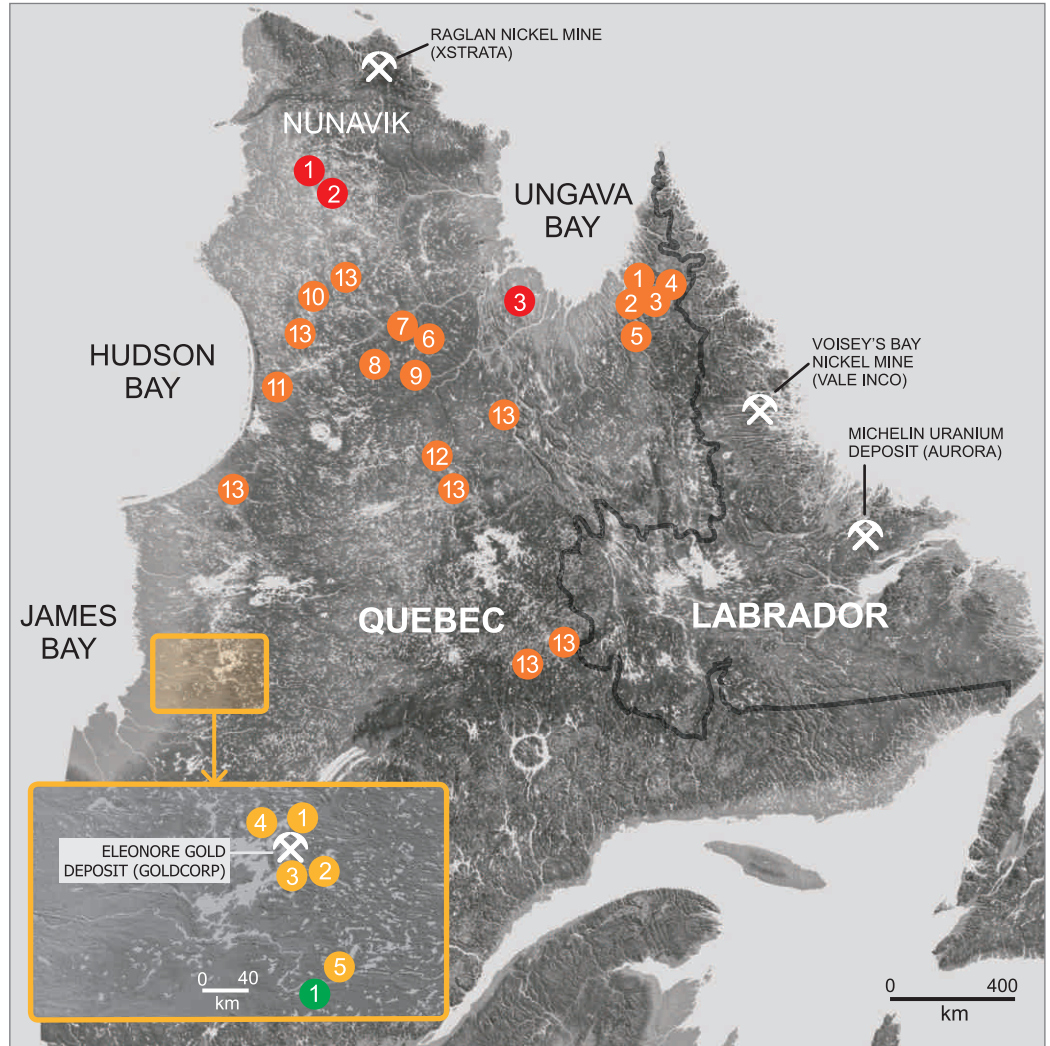
### KEY FACTS

- 22 properties
- Largest claim holder in Quebec (17,000 claims, 8% of provincial total)
- 12 partnership agreements
- Minimum \$6.0 M for exploration in 2010
- >200 prospects discovered in 5 years (validation of targeting methodology)

### FINANCIAL DATA

(as at May 31, 2010)

- Issued shares: 25.1 million
- Insiders: 15.8 %
- Cash and shares: \$4.0 million
- 12-mo. trading range: \$0.40-\$0.92
- Large institutional shareholders



### CORPORATE STRATEGY

Azimut faces the challenge of exploration by combining two approaches in an efficient way: (1) performing cutting-edge regional-scale mineral potential assessments to identify the very best targets and, consequently, reduce the technical risk; and (2) developing partnerships at an early stage on those targets to reduce the business risk. Azimut considers that this combined strategy is critical for enhancing the probability of discoveries and wealth creation. It also offers a highly competitive edge for shareholders.

### TECHNICAL LEVERAGE

The quality of initial targeting is the most critical factor for success in mineral exploration. Azimut generates targets by processing large geoscience databases using proprietary predictive tools. The targets are further validated using the team's considerable exploration know-how. Azimut's methodology is applied to a range of attractive commodities and mineral deposit types, and can be used worldwide wherever adequate databases exist. Azimut is the #1 claim holder and one of the most active exploration companies in the mining-friendly province of Quebec.

## HIGHLIGHTS

- ➔ **URANIUM:** Discovery of a new uranium district in northern Quebec
- ➔ **RARE EARTHS - COPPER:** Giant IOCG footprint recognized at Rex property: one of the strongest and largest REE-Cu anomalies in lake-bottom sediments in Quebec and Labrador
- ➔ **GOLD:** Strategic land holdings in the Eleonore gold deposit area of Quebec



## MANAGEMENT AND DIRECTORS

### Jean-Marc Lulin, P.Geo., Ph.D.

President, CEO and Director

A senior mining executive with 29 years of experience in North America, Africa and Europe. Dr. Lulin designed the mineral potential targeting methodology that constitutes the cornerstone of Azimut's activity. Prior engagements include President, COO and Director for Channel Resources, Chief Geologist for SOQUEM and the Vior-Mazarin Group, and Geologist for the BRGM.

### Dennis Wood, O.C.

Chairman of the Board

Highly respected self-directed venture capitalist with more than 30 years experience as manager and board member for many large American and Canadian companies.

### Moniroth Lim, C.G.A.

Secretary Treasurer

A highly experienced financial and auditing professional with more than 20 years of experience. Ms. Lim's area of expertise includes the preparation of statutory reports for publicly traded mining companies, equity financing, management of financial audits, and review of internal controls.

### Normand Champigny, P.Eng., M.A.Sc.

Senior Consultant

A geological engineer with 29 years of international experience in the mining industry, who has worked with leading consulting organizations on a wide range of mining projects.

### Jean-Charles Potvin, MBA, B.Sc.

Director

Chief executive and director of several public natural resource companies operating in Canada and internationally. Mr. Potvin has evaluated and secured financing for many mining investment opportunities around the world.

### Louis P. Salley, B.A., LL.B.

Director

Senior barrister and solicitor with more than 30 years of Canadian and international practice, currently focusing on the mining and oil & gas sectors.

### Pierre Toth, M.Sc.

Director

Business administration professor and equity fund advisor specializing in the clean technology and renewable energy sectors, also serving as senior financial officer for several large Canadian corporations.

## CONTACT

Jean-Marc Lulin  
President and CEO

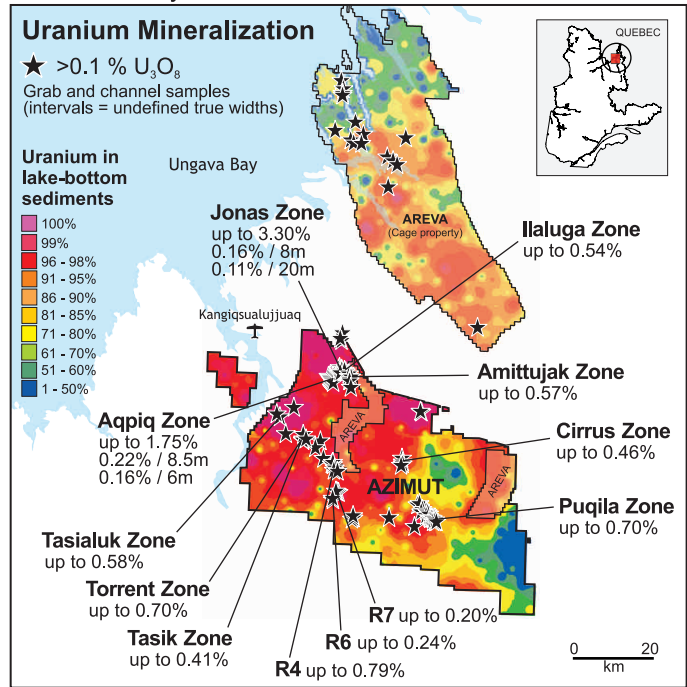
Telephone: +1 (450) 646-3015  
Fax: +1 (450) 646-3045

Azimut Exploration Inc.  
110 De La Barre Street, suite 214  
Longueuil (Quebec)  
Canada J4K 1A3

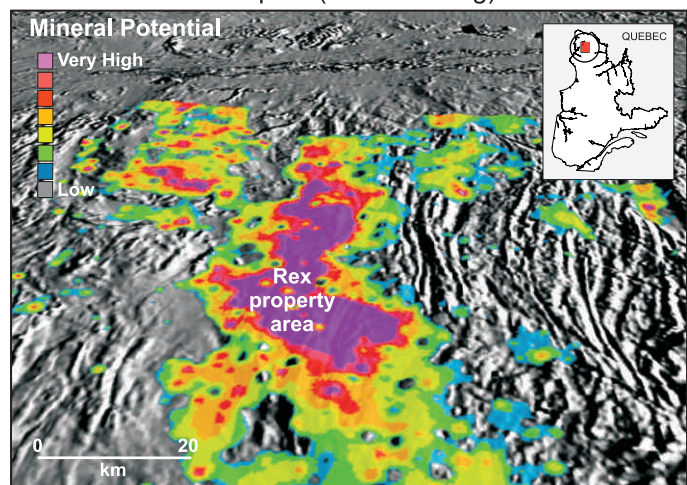
info@azimut-exploration.com  
www.azimut-exploration.com

Fact sheet last updated: July 2010

## ➔ URANIUM Ungava Bay Region, Quebec Discovery of a new uranium district



## ➔ RARE EARTHS - COPPER Northern Quebec Giant IOCG footprint (>100 km long)



## ➔ GOLD James Bay Region, Quebec Eleonore gold deposit area

