

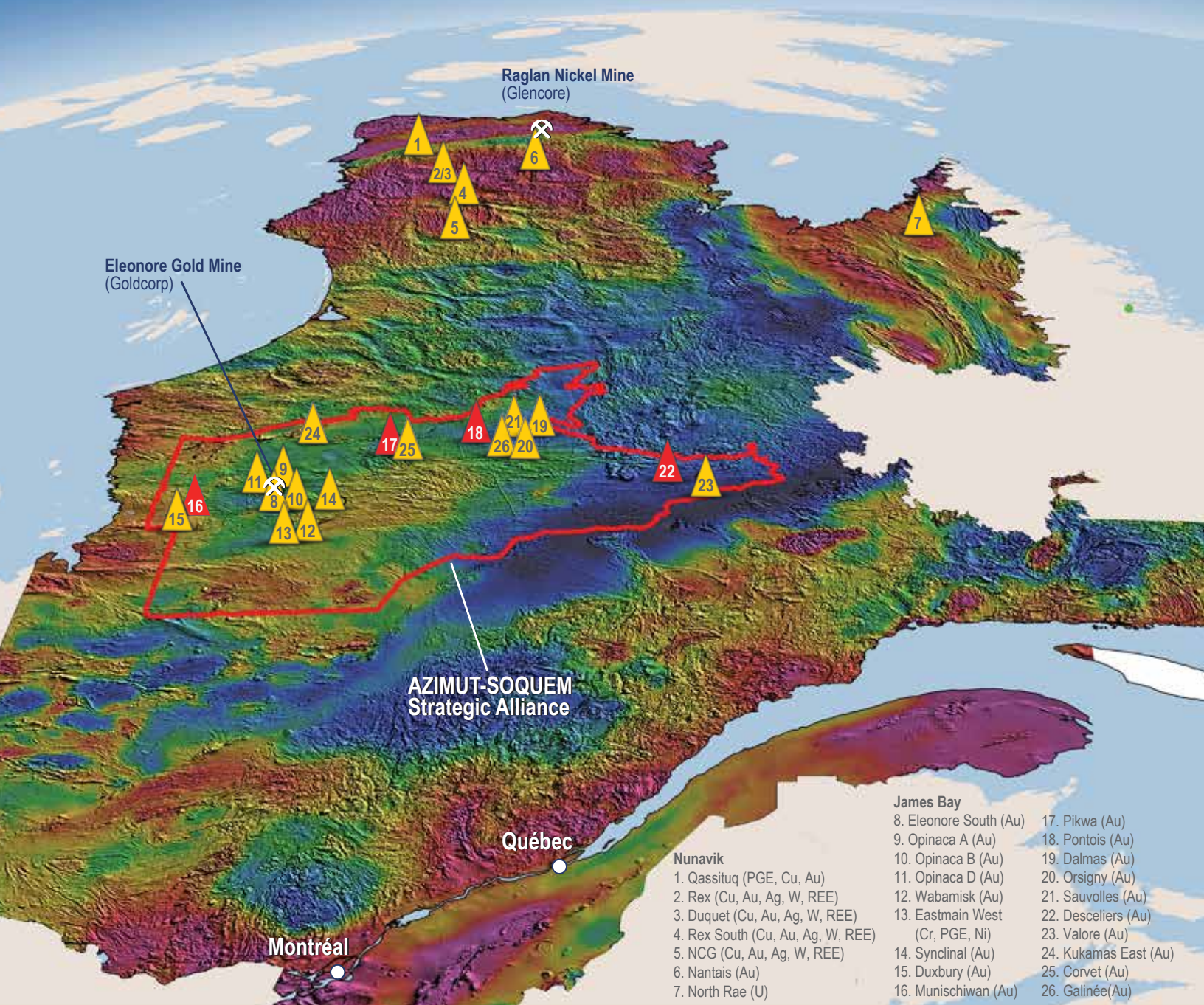


**AZIMUT**  
EXPLORATION

# STRATEGIC VISION OF QUEBEC

## INNOVATIVE · SYSTEMATIC · DISCIPLINED

TSXV : AZM



- |                                   |                                 |                       |
|-----------------------------------|---------------------------------|-----------------------|
| <b>Nunavik</b>                    | 8. Eleonore South (Au)          | 17. Pikwa (Au)        |
| 1. Qassituq (PGE, Cu, Au)         | 9. Opinaca A (Au)               | 18. Pontois (Au)      |
| 2. Rex (Cu, Au, Ag, W, REE)       | 10. Opinaca B (Au)              | 19. Dalmis (Au)       |
| 3. Duquet (Cu, Au, Ag, W, REE)    | 11. Opinaca D (Au)              | 20. Orsigny (Au)      |
| 4. Rex South (Cu, Au, Ag, W, REE) | 12. Wabamisk (Au)               | 21. Sauvolles (Au)    |
| 5. NCG (Cu, Au, Ag, W, REE)       | 13. Eastmain West (Cr, PGE, Ni) | 22. Desceliers (Au)   |
| 6. Nantais (Au)                   | 14. Synclinal (Au)              | 23. Valore (Au)       |
| 7. North Rae (U)                  | 15. Duxbury (Au)                | 24. Kukamas East (Au) |
|                                   | 16. Munischiwan (Au)            | 25. Corvet (Au)       |
|                                   |                                 | 26. Galinée (Au)      |

## HIGHLIGHTS

One of the largest exploration portfolios in a world-renowned mining jurisdiction

26 properties for gold, base metals and strategic metals in Quebec

- Key gold position in the world-class Eleonore mining camp
- Major polymetallic properties in Nunavik, Quebec's Far North

30 partnership agreements since 2004, including Rio Tinto, Goldcorp, Hecla Mining, IAMGOLD and SOQUEM

Leading expertise in exploration targeting validated by extensive field success

## STRATEGY

Azimut builds sustainable wealth for its shareholders by combining:

- Advanced digital processing of Big Data to generate targets and enhance discovery probability
- Partnership development to minimize business risk and preserve a tight capital structure

This approach creates maximum value at every stage, from partnership development to future royalty streams.

## CORPORATE & FINANCIAL DATA

(as at May 31, 2017)

Founded in 1986, never consolidated

Shares outstanding	45.4 million
Shares fully diluted	53.3 million
Top shareholders	53.8%
· Insiders	5.3%
· Quebec's institutional funds	28.0%
· Eleven other individual investors	20.5%
Working capital	\$2.3 million
12-month trading range	\$0.235 - \$0.68

## MANAGEMENT & DIRECTORS

Jean-Marc Lulin, P.Geo., PhD

*President, CEO and Director*

A senior mining executive with over 30 years experience in North America, Africa and Europe. Dr. Lulin designed the targeting methodology that is the cornerstone of Azimut's activity. Prior engagements include President, COO and Director for Channel Resources, Chief Geologist for SOQUEM and the Vior-Mazarin Group, and Geologist for the BRGM.

Jean-Charles Potvin, MBA, B.Sc.

*Director*

Chief executive and director of several public natural resource companies operating in Canada and internationally. Mr. Potvin has evaluated and secured financing for many mining investment opportunities worldwide.

Louis P. Salley, B.A., LL.B.

*Director*

Senior barrister and solicitor with more than 30 years of Canadian and international practice, currently focusing on the mining and oil & gas sectors.

Jacques Simoneau, PhD

*Director*

A seasoned senior executive with comprehensive experience in private investment, venture capital and technology. Certified ICD.D, Dr. Simoneau is President and CEO of Gestion Univalor, L.P. and serves on a number of boards.

Moniroth Lim, CPA, CGA

*Chief Financial Officer and Corporate Secretary*

A highly experienced financial and auditing professional with over 20 years experience. Ms. Lim's expertise includes the preparation of statutory reports for publicly traded mining companies, equity financing, financial audit management and internal control reviews.

## CONTACT

**Azimut Exploration Inc.**

110, De La Barre Street, suite 214  
Longueuil (Quebec)  
Canada J4K 1A3

Telephone: +1 (450) 646-3015

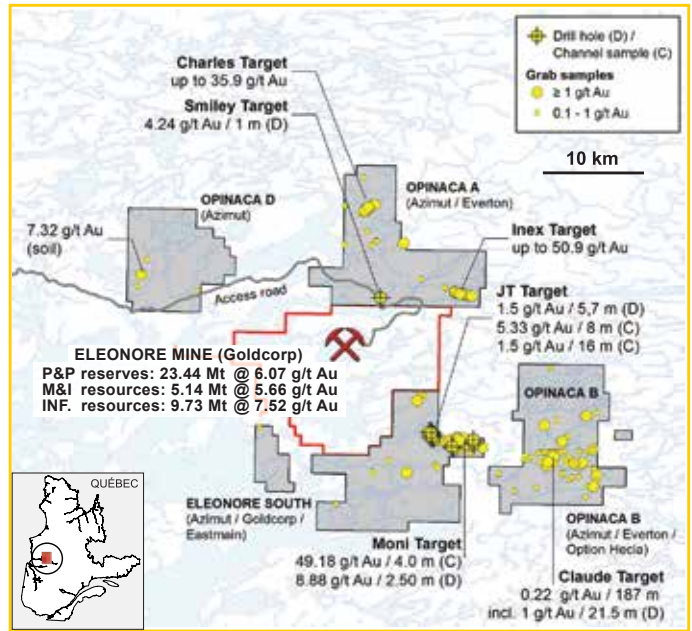
Fax: +1 (450) 646-3045

info@azimut-exploration.com

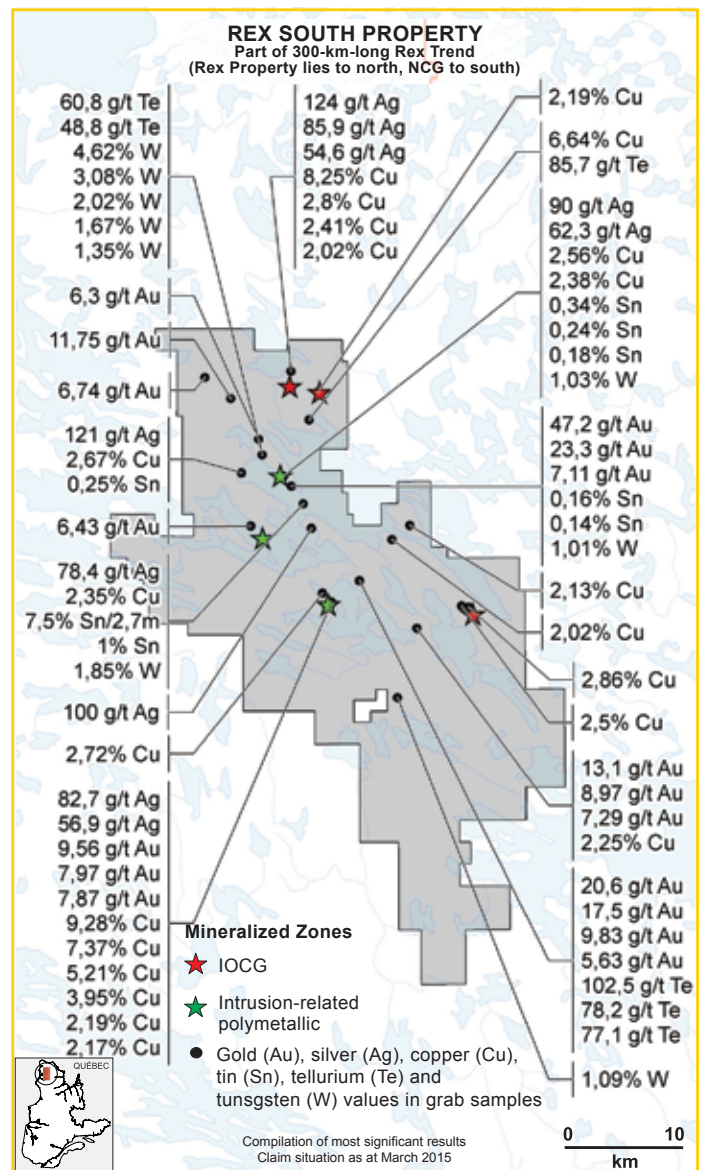
www.azimut-exploration.com



**GOLD** James Bay Region, Quebec  
Eleonore Gold Camp



**COPPER-GOLD-TUNGSTEN** Nunavik, Northern Quebec  
Large intrusion-related gold systems, IOCG targets



Compilation of most significant results  
Claim situation as at March 2015

Fact sheet last updated July 05, 2017