



AZIMUT EXPLORATION INC.

MANAGEMENT'S DISCUSSION AND ANALYSIS

For the three-month period ended November 30, 2017

INDEX

| | |
|--|----|
| SCOPE OF MANAGEMENT'S FINANCIAL ANALYSIS | 2 |
| CORPORATE PROFILE AND MISSION | 2 |
| OVERALL PERFORMANCE | 3 |
| EXPLORATION AND EVALUATION ASSETS | 3 |
| JAMES BAY REGION | 7 |
| NUNAVIK REGION | 25 |
| REGIONAL MODELLING AND PROJECT GENERATION | 36 |
| PERSPECTIVE | 36 |
| SELECTED FINANCIAL INFORMATION | 38 |
| RESULTS OF OPERATIONS | 38 |
| OTHER INFORMATION | 39 |
| CASH FLOWS, LIQUIDITY AND CAPITAL RESOURCES | 39 |
| QUARTERLY INFORMATION | 40 |
| CONTRACTUAL OBLIGATIONS | 41 |
| OFF-BALANCE SHEET ARRANGEMENTS | 41 |
| CARRYING AMOUNT OF EXPLORATION AND EVALUATION ("E&E") ASSETS | 41 |
| RELATED PARTY TRANSACTIONS | 41 |
| SUBSEQUENT EVENT | 42 |
| SUMMARY OF SIGNIFICANT ACCOUNTING POLICIES | 42 |
| NEW ACCOUNTING STANDARDS OR AMENDMENTS | 42 |
| CRITICAL ACCOUNTING POLICIES AND ESTIMATES | 42 |
| INFORMATION REGARDING OUTSTANDING SHARES | 42 |
| RISK RELATED TO FINANCIAL INSTRUMENTS | 42 |
| RISKS AND UNCERTAINTIES | 42 |
| OUTLOOK | 43 |
| ADDITIONAL INFORMATION AND CONTINUOUS DISCLOSURE | 43 |
| CAUTION REGARDING FORWARD-LOOKING INFORMATION | 43 |
| CORPORATE INFORMATION | 44 |

SCOPE OF MANAGEMENT'S FINANCIAL ANALYSIS

This report represents a complementary addition to the unaudited condensed interim financial statements by providing additional contextual and prospective information on the financial position and operating performance of Azimut Exploration Inc. (“Azimut” or the “Company”) for the three-month period ended November 30, 2017 (“Q1 2018”). This report should be read in conjunction with the Company’s unaudited condensed interim financial statements for the three-month period ended November 30, 2017 and the annual financial statements for the year ended August 31, 2017, which were prepared in accordance with International Financial Reporting Standards (“IFRS”) as issued by the International Accounting Standards Board (“IASB”). All figures are in Canadian dollars unless otherwise noted.

CORPORATE PROFILE AND MISSION

Azimut is a publicly traded Canadian exploration-stage company that specializes in mineral potential assessments and targeting to discover major ore deposits. Azimut conducts its exploration activities by following two main guiding principles. First, the Company maximizes the probability of discovery by using a cutting-edge targeting methodology that reduces exploration risk. Second, the Company reduces business risk by developing partnerships for projects generated by its targeting methodology.

As at January 19, 2018, Azimut holds twenty-seven (27) exploration properties comprising 6,591 claims (27 properties and 6,419 claims as at November 30, 2017). The properties were acquired based on the results of the Company’s regional-scale assessments of Quebec’s mineral potential modelling. Azimut owns a 100% interest in all but eight (8) of its properties: Eleonore South (26.57%); Opinaca A, Opinaca B, Munischiwan, Pikwa, Pontois and Desceliers (50% each); and Wabamisk (49%). The Company’s property portfolio comprises the following (Figure 1):

In the Nunavik region:

- 5 polymetallic properties (Rex, Duquet, Rex South, NCG and Qassituq)
- 1 gold property (Nantais)

In the Ungava Bay region:

- 1 uranium property (North Rae)

In the James Bay region:

- 4 gold properties in the Eleonore Gold Camp area (Opinaca A, Opinaca B, Eleonore South and Opinaca D)
- 1 gold property in the Eastmain River area (Wabamisk)
- 1 chromium and platinum group element (PGE) property in the Eastmain River area (Eastmain West)
- 13 gold properties in other areas (Munischiwan, Pikwa, Pontois, Desceliers, Duxbury, Dalmas, Orsigny, Sauvolles, Synclinal, Valore, Corvet, Galinée and Kukamas East)
- 1 zinc property (Cawachaga)

Jean-Marc Lulin, geologist, president, chief executive officer and director of Azimut, is a qualified person under National Instrument 43-101 and has reviewed the technical disclosures presented in subsequent sections. All claim totals, surface areas and property descriptions are effective as at January 19, 2018.

OVERALL PERFORMANCE

Summary of activities for the quarter and subsequent activities:

- Azimut and its joint venture partners announced the results of the first 18 holes (4,443 m) of the ongoing 8,000-metre 2017-2018 diamond drilling program on the Eleonore South Property, as well as additional high-grade gold results from a follow-up prospecting program;
- Azimut is compiling and interpreting the results of a prospecting program on five gold properties under the Strategic Alliance with SOQUEM in the James Bay region (Pikwa, Corvet, Pontois, Desceliers and Munischiwan; 953 samples), as well as the results of a lake-bottom sediment geochemical survey on five other gold properties under the Alliance (Galinée, Sauvolles, Orsigny, Dalmas and Synclinal; 614 samples);
- Azimut's partner Goldcorp Inc. commenced an airborne geophysical survey over the Wabamisk Property in the James Bay region;
- Azimut's partner Hecla Quebec Inc. completed its obligation to earn a 50% interest on the Opinaca B Property.

Highlights for Q1 2018:

- Azimut completed a non-brokered private placement of 3,100,000 flow-through shares at \$0.50 per share, for aggregate gross proceeds of \$1,550,000;
- Azimut ended Q1 2018 with a working capital of \$1.9 million¹ (\$2.8 million – November 30, 2016: “Q1 2017”). Management believes it has sufficient funds to pay its ongoing general and administrative expenses and to meet its liabilities, obligations and existing commitments for at least the next twelve (12) months following Q1 2018;
- Azimut incurred \$1.3 million in exploration and evaluation expenditures and the construction cost of an exploration camp, of which \$1.0 million was charged back to the joint venture partners.

EXPLORATION AND EVALUATION ASSETS

In Q1 2018, the Company incurred exploration and evaluation (“E&E”) expenditures totalling \$274,000 (\$432,000 – Q1 2017). Most of the work was conducted on the Eleonore South, Eastmain West and Valore properties in the James Bay region.

The exploration and evaluation assets for Q1 2018 are detailed in the tables on the following pages. All mining properties are located in the Province of Quebec.

¹ For ease of reading and comparison, dollar amounts in this MD&A are rounded to the nearest thousand for amounts over \$1,000 and to the nearest hundred otherwise, except for equity prices and exercise prices. Refer to the accompanying financial statements for exact amounts.

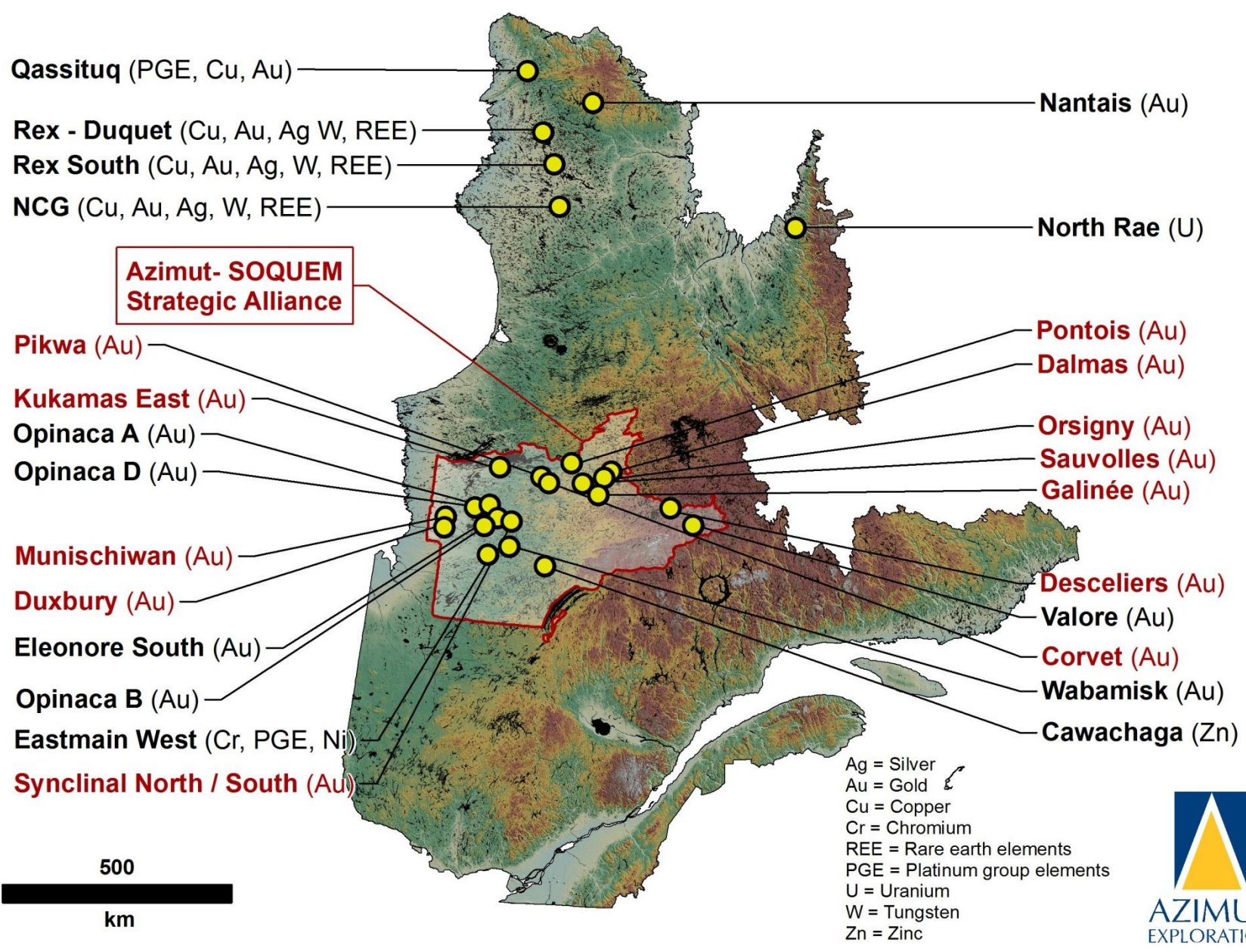


Figure 1: Azimut property location map.

Change in E&E assets

| Mineral property | Acquisition costs | | Exploration costs | | | | | | | Depreciation of property & equipment | Cost incurred during the period | Credit on duties and refundable tax credit for resources | Net book value as at November 30, 2017 |
|--------------------------------------|--------------------------------------|------------------|----------------------|---------------------|----------------------|----------------|---------------|----------------|---------------|--------------------------------------|---------------------------------|--|--|
| | Net book value as at August 31, 2017 | Claims & permits | Geo-chemical surveys | Geo-logical surveys | Geo-physical surveys | Drilling | Stripping | Admin. & other | | | | | |
| | \$ | \$ | \$ | \$ | \$ | \$ | \$ | \$ | \$ | \$ | \$ | \$ | |
| James Bay | | | | | | | | | | | | | |
| Opinaca A | 36,464 | - | - | - | - | - | - | - | - | - | - | 36,464 | |
| Opinaca B | 3,696 | - | - | 755 | - | 690 | - | - | - | 1,445 | (620) | 4,521 | |
| Eleonore South | 468,673 | - | 4,311 | 40,760 | 5,699 | 175,776 | 18,035 | (66) | 8,747 | 253,262 | (106,500) | 615,433 | |
| Opinaca D | 98,398 | - | - | 127 | - | - | - | - | - | 127 | - | 98,526 | |
| Wabamisk | 19,137 | - | - | 575 | 65 | - | - | - | - | 640 | (270) | 19,507 | |
| Duxbury | 21,842 | - | - | - | - | - | - | - | - | - | - | 21,842 | |
| Valore | 53,276 | - | - | - | - | - | - | - | - | - | - | 53,276 | |
| Munischiwan | 1 | - | - | - | - | - | - | - | - | - | - | 1 | |
| Pikwa | 1 | - | - | - | - | - | - | - | - | - | - | 1 | |
| Pontois | 1 | - | - | - | - | - | - | - | - | - | - | 1 | |
| Desceliers | 1 | - | - | - | - | - | - | - | - | - | - | 1 | |
| Strategic Alliance – SOQUEM | 127,968 | 9,503 | - | - | - | - | - | - | - | 9,503 | - | 137,471 | |
| Total – Gold | 829,458 | 9,503 | 4,311 | 42,217 | 5,764 | 176,466 | 18,035 | (66) | 8,747 | 264,977 | (107,390) | 987,045 | |
| Eastmain West | 172,025 | - | - | 1,425 | - | - | - | - | - | 1,425 | (620) | 172,830 | |
| Total – Chromium-PGE | 172,025 | - | - | 1,425 | - | - | - | - | - | 1,425 | (620) | 172,830 | |
| Cawachaga | 6,729 | - | - | - | - | - | - | - | - | - | - | 6,729 | |
| Total – Zinc | 6,729 | - | - | - | - | - | - | - | - | - | - | 6,729 | |
| Total – James Bay | 1,008,212 | 9,503 | 4,311 | 43,642 | 5,764 | 176,466 | 18,035 | (66) | 8,747 | 266,402 | (108,010) | 1,166,604 | |
| Nunavik | | | | | | | | | | | | | |
| Rex | 1,013,647 | 118 | - | 599 | - | - | - | - | 659 | 1,376 | (260) | 1,014,764 | |
| Duquet | 4,056 | - | - | - | - | - | - | - | - | - | - | 4,056 | |
| Rex South | 400,000 | - | - | 1,094 | - | - | - | - | 771 | 1,865 | (470) | 401,395 | |
| NCG | - | - | - | - | - | - | - | - | - | - | - | - | |
| Nantais | 96,756 | - | - | 337 | - | - | - | - | - | 337 | (130) | 96,963 | |
| Qassituq | - | 3,816 | - | 65 | - | - | - | - | - | 3,881 | - | 3,881 | |
| Total – Gold and Polymetallic | 1,514,459 | 3,934 | - | 2,095 | - | - | - | - | 1,430 | 7,459 | (860) | 1,521,058 | |
| North Rae | - | - | - | - | - | - | - | - | - | - | - | - | |
| Total – Uranium | - | - | - | - | - | - | - | - | - | - | - | - | |
| Total – Nunavik | 1,514,459 | 3,934 | - | 2,095 | - | - | - | - | 1,430 | 7,459 | (860) | 1,521,058 | |
| Total – E&E assets | 2,522,671 | 13,437 | 4,311 | 45,737 | 5,764 | 176,466 | 18,035 | (66) | 10,177 | 273,861 | (108,870) | 2,687,661 | |

Change in E&E assets

| Exploration properties | Acquisition costs | | Exploration costs | | | | | | Cost incurred during the period | Credit on duties refundable for loss and refundable tax credit for resources | Impairment | Net book value as at November 30, 2016 |
|--------------------------------------|--------------------------------------|------------------|----------------------|---------------------|----------------------|----------------|----------------|--------------------------------------|---------------------------------|--|--------------|--|
| | Net book value as at August 31, 2016 | Claims & permits | Geo-chemical surveys | Geo-logical surveys | Geo-physical surveys | Drilling | Admin. & other | Depreciation of property & equipment | | | | |
| | \$ | \$ | \$ | \$ | \$ | \$ | \$ | \$ | \$ | \$ | \$ | \$ |
| James Bay | | | | | | | | | | | | |
| Opinaca A | 17,248 | 8,847 | 1,136 | 410 | - | - | 540 | - | 10,933 | (675) | - | 27,506 |
| Opinaca B | 1,413 | - | - | - | - | - | - | - | - | - | - | 1,413 |
| Eleonore South | 87,997 | - | - | 14,909 | 2,455 | 198,895 | 11,154 | - | 227,413 | (94,400) | - | 221,010 |
| Opinaca D | 70,894 | 4,535 | 10,629 | 4,229 | - | - | - | - | 19,393 | (6,450) | - | 83,837 |
| Wabamisk | 18,716 | - | - | - | - | - | - | - | - | - | - | 18,716 |
| Duxbury | - | 21,842 | - | - | - | - | - | - | 21,842 | - | - | 21,842 |
| Valore | - | 17,142 | 47,434 | 1,776 | - | - | - | - | 66,352 | (21,400) | - | 44,952 |
| Munischiwan | - | 1 | - | - | - | - | - | - | 1 | - | - | 1 |
| Pikwa | - | 1 | - | - | - | - | - | - | 1 | - | - | 1 |
| Pontois | - | 1 | - | - | - | - | - | - | 1 | - | - | 1 |
| Desceliers | - | 1 | - | - | - | - | - | - | 1 | - | - | 1 |
| Others, gold | - | 28,477 | - | - | - | - | - | - | 28,477 | - | - | 28,477 |
| Total – Gold | 196,268 | 80,847 | 59,199 | 21,324 | 2,455 | 198,895 | 11,694 | - | 374,414 | (122,925) | - | 447,757 |
| Eastmain West | 77,152 | 3,443 | - | 38,317 | - | - | - | - | 41,760 | (13,000) | - | 105,912 |
| Total – Chromium-PGE | 77,152 | 3,443 | - | 38,317 | - | - | - | - | 41,760 | (13,000) | - | 105,912 |
| Total – James Bay | 273,420 | 84,290 | 59,199 | 59,641 | 2,455 | 198,895 | 11,694 | - | 416,174 | (135,925) | - | 553,669 |
| Nunavik | | | | | | | | | | | | |
| Rex | 2,162,354 | - | - | 704 | - | - | - | 2,099 | 2,803 | (300) | - | 2,164,857 |
| Duquet | 751 | 3,305 | - | - | - | - | - | - | 3,305 | - | - | 4,056 |
| Rex South | 565,190 | 5,178 | - | 1,467 | - | - | - | 1,295 | 7,940 | (600) | - | 572,530 |
| Nantais | 187,243 | 881 | - | 767 | - | - | - | - | 1,648 | (330) | - | 188,561 |
| Qassituq | 36,928 | - | - | - | - | - | - | - | - | - | - | 36,928 |
| Total – Gold and Polymetallic | 2,952,466 | 9,364 | - | 2,938 | - | - | - | 3,394 | 15,696 | (1,230) | - | 2,966,932 |
| North Rae | - | 246 | - | - | - | - | - | - | 246 | - | (246) | - |
| Total – Uranium | - | 246 | - | - | - | - | - | - | 246 | - | (246) | - |
| Total – Nunavik | 2,952,466 | 9,610 | - | 2,938 | - | - | - | 3,394 | 15,942 | (1,230) | (246) | 2,966,934 |
| Total – E&E assets | 3,225,886 | 93,900 | 59,199 | 62,579 | 2,455 | 198,895 | 11,694 | 3,394 | 432,116 | (137,155) | (246) | 3,520,601 |

JAMES BAY REGION

Since Azimut performed its initial mineral potential modelling across the James Bay (Eeyou Istchee) territory in 2003, the region has been a strategic priority for the Company. Azimut's current holdings in the region—18 gold properties, a chromium-PGE property, and a zinc property—are concentrated in the Eleonore Gold Camp, the Eastmain River area, and in the northern third of the territory. Ownership is summarized below and detailed descriptions follow.

Eleonore Gold Camp – Gold

| | |
|----------------|---|
| Opinaca A | Agreement with Everton Resources Inc. (“Everton”) |
| Opinaca B | Agreement with Everton and Hecla Quebec Inc. (“Hecla”, formerly Aurizon) |
| Eleonore South | Three-party agreement with Eastmain Resources Inc. (“Eastmain Resources”) and Les Mines Opinaca Ltée (a wholly-owned subsidiary of Goldcorp Inc.; “Goldcorp”) |
| Opinaca D | 100% Azimut |

Eastmain River Area – Gold

| | |
|----------|-------------------------|
| Wabamisk | Agreement with Goldcorp |
|----------|-------------------------|

Eastmain River Area – Chromium-PGE

| | |
|---------------|-------------|
| Eastmain West | 100% Azimut |
|---------------|-------------|

Azimut-SOQUEM Strategic Alliance – Gold

| | |
|--------------|---------------------------------------|
| Desceliers | Agreement with SOQUEM Inc. (“SOQUEM”) |
| Munischawan | Agreement with SOQUEM |
| Pikwa | Agreement with SOQUEM |
| Pontois | Agreement with SOQUEM |
| Corvet | 100% Azimut; offered to SOQUEM |
| Dalmas | 100% Azimut; offered to SOQUEM |
| Duxbury | 100% Azimut; offered to SOQUEM |
| Galinée | 100% Azimut; offered to SOQUEM |
| Kukamas East | 100% Azimut; offered to SOQUEM |
| Orsigny | 100% Azimut; offered to SOQUEM |
| Sauvolles | 100% Azimut; offered to SOQUEM |
| Synclinal | 100% Azimut; offered to SOQUEM |

Other properties in the James Bay region

| | |
|------------------|-------------|
| Valore – Gold | 100% Azimut |
| Cawachaga – Zinc | 100% Azimut |

ELEONORE CAMP – GOLD

In 2004, Virginia Mines Inc. discovered the Roberto (Eleonore) gold deposit on the Opinaca Reservoir, 320 kilometres from Matagami or Chibougamau. The project was acquired by Goldcorp in 2006, and the Eleonore mine poured its first gold bar on October 1, 2014. The mine reached commercial production on April 1, 2015. Gold production in 2016 was 274,000 ounces and is expected to reach 315,000 ounces in 2017. The operation has begun to develop a fifth mining horizon and build a production shaft, both of which will bring the mine closer to full production capacity. Known mineralization at Eleonore has been traced to a vertical depth of 1,500 metres and is still open down plunge (Goldcorp website).

Goldcorp's 43-101 compliant mineral reserve and resource statement, as of June 30, 2017, announced proven and probable reserves of 19.61 Mt at 6.02 g/t Au for 3.80 Moz of gold, measured and indicated resources of 7.16 Mt at 5.81 g/t Au for 1.34 Moz of gold, and inferred resources of 8.45 Mt at 7.31 g/t Au for 1.99 Moz of gold (Goldcorp website).

Azimut acquired extensive holdings both before and after the 2004 Eleonore discovery based on the targeting results of the Company's gold potential modelling of the entire James Bay region. As a result, Azimut gained one of the leading property positions in the area (Figure 2). Several exploration targets on the Eleonore gold mine property are in close proximity to Azimut's project boundaries, and positive new results have recently been obtained on another adjacent property (see below for details).

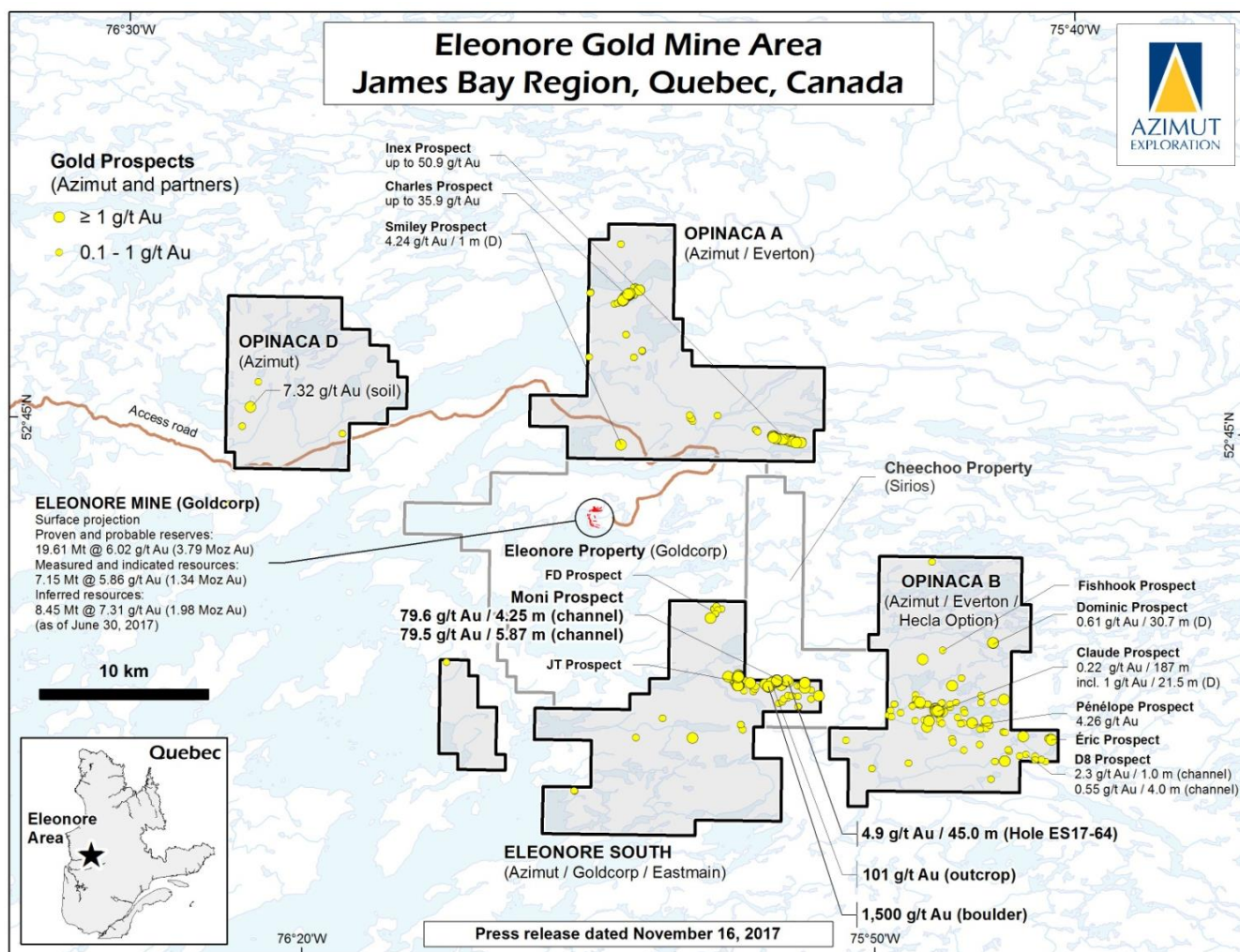


Figure 2: Azimut's gold properties in the Eleonore Gold Camp area, James Bay region, Northern Québec.

Opinaca A Property

The Opinaca A Property (247 claims, 128.7 km²) is adjacent to Goldcorp's Eleonore gold mine property (Figure 2). In April 2010, Azimut confirmed that its partner Everton had earned its 50% interest on the Opinaca A Property. In September 2010, the property became subject to a three-way agreement between Azimut, Everton and Hecla covering both the Opinaca A and B properties, but this agreement was later amended on November 14, 2014 to exclude all claims comprising the Opinaca A Property.

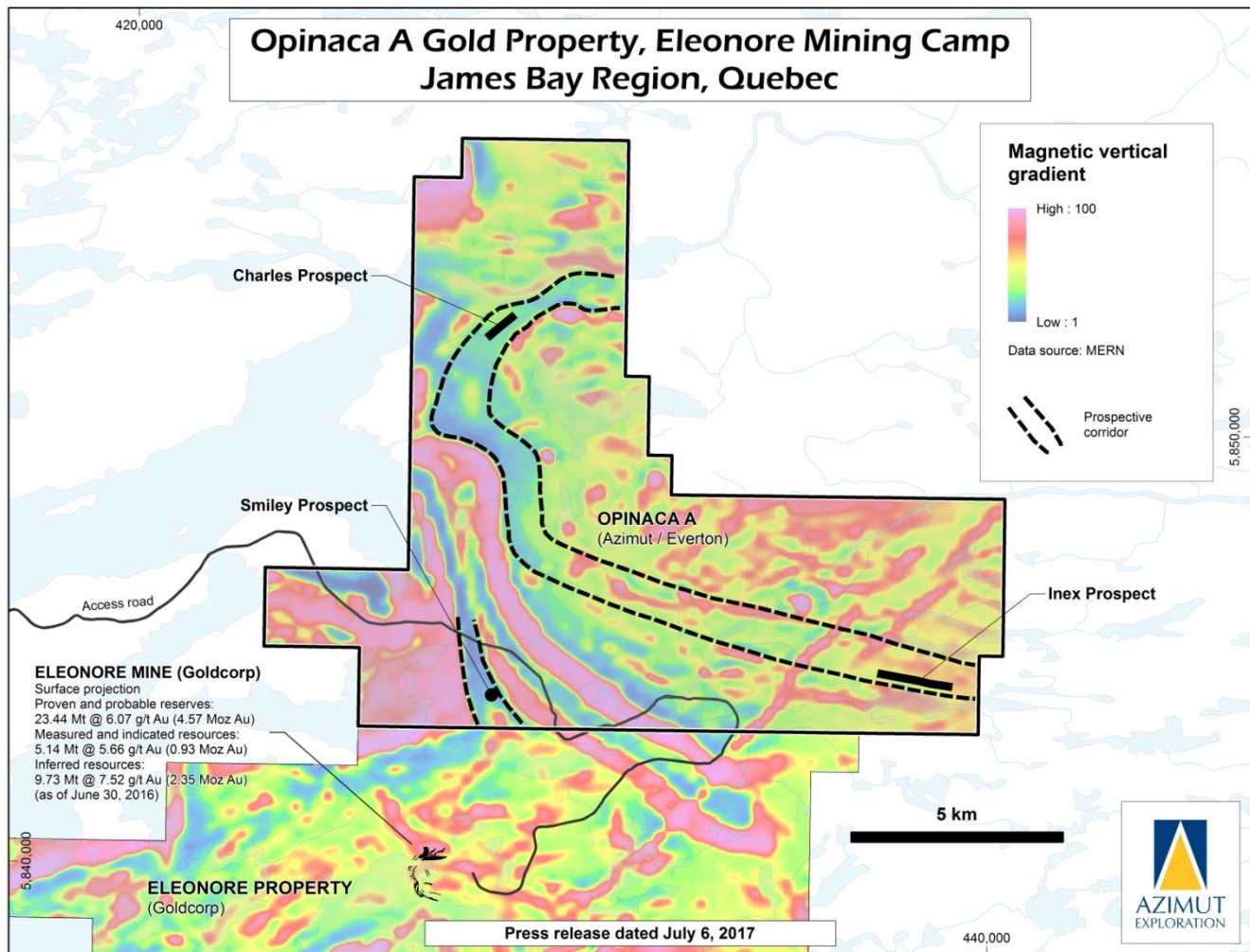


Figure 3: Map of magnetic vertical gradient showing prospective trends on the Opinaca A Property and the location of prospects (see Figure 2 of press release for drill results).

A recent reassessment of the Property's gold potential using previous exploration work and new regional information (press release of July 6, 2017), concluded that two major gold prospects (Charles and Inex; see descriptions below) may be linked by a 20-kilometre prospective trend defined by geophysical, geological and geochemical parameters, including till anomalies (Figure 3). This underexplored sector is characterized by: a) the continuity of the magnetic signature between the two prospects; b) arsenic, antimony and bismuth anomalies in lake-bottom sediments; c) gold anomalies in glacial sediments; and d) local evidence of folding that may act as traps for gold mineralization.

The previous exploration program was a combined \$850,000 Opinaca A/B program in 2014, funded and operated by Hecla. The program included a \$205,000 dedicated Opinaca A diamond drilling program (2,317 m in 9 holes) that focused on targets in the Smiley Prospect area (see below), which had been identified by a 2008 work program by partner Everton (1,600 m in 12 holes, geophysics and geochemistry). The 2014 program also included prospecting, channelling and till sampling, which extended the Charles Prospect (see below) and improved target definition in the area (press release of March 19, 2015). The salient results of the 2014 and 2008 work programs are summarized in the descriptions below.

The **Charles Prospect** is a 1-kilometre-long gold prospect hosted in biotite-rich paragneiss with quartz veins and up to 15% sulphides (pyrite, pyrrhotite). Several high-grade gold grab samples were obtained (up to 42.34 g/t Au). The best drill hole intersection was 2.7 g/t Au over 2.0 m (hole AC-07-01).

The **Inex Prospect** is a 1.7-kilometre-long gold prospect associated with a garnet-biotite-amphibole-silica-rich rock hosted in paragneiss. Gold is free or associated with pyrite and pyrrhotite. The best grab samples returned up to 50.9 g/t Au and the best drill hole returned 9.03 g/t Au over 0.6 m (hole OP-06-02).

The **Smiley Prospect** (4.24 g/t Au over 1.0 m in hole OS-08-04-A), located 800 metres north of the boundary with the Eleonore mine property, is positioned along an interpreted 2.5-kilometre-long north-trending prospective target supported by magnetic data. It is characterized by a major gold anomaly in till coupled with a gold-arsenic anomaly in soil.

For Q1 2018, Azimut did not incur any claim renewal expenditures (\$9,000 – Q1 2017) or exploration work (\$2,000 – Q1 2017).

Opinaca B Property

The Opinaca B Property (248 claims in 2 blocks, 129.7 km²) lies 8 kilometres east of Goldcorp's Eleonore Property boundary and is adjacent to the Cheechoo Gold Project held by Sirios Resources Inc. (Figures 2 and 4). In 2010, Everton earned its 50% interest in the property, and Hecla signed a three-way agreement with Azimut, Everton and Hecla, as announced on September 16, 2010. According to the terms of the agreement, Hecla has the option to acquire a 50% interest in the Opinaca B Property by making cumulative cash payments of \$580,000 and incurring a total of \$6.0 million in exploration work over four (4) years (later extended by an additional two (2) years in an amendment dated November 15, 2013). Hecla may earn an additional interest of 10%, for a total interest of 60%, by making cumulative cash payments of \$300,000 and incurring at least \$3 million in exploration expenditures over three (3) years from the election date, and by delivering an independent pre-feasibility study on or before the fourth anniversary. The Company will receive cash payments of \$290,000 on the first option and \$150,000 on the second option, and its resulting interest will be 20%. In addition, in the event that mineral resources of at least 2 million ounces of gold at an average grade of at least 6 g/t Au are discovered before the end of the eighth year of the initial option agreement, Hecla shall make a payment of \$1.5 million in Hecla common shares, subject to regulatory approval. The Company will receive 50% of these issued shares.

2017 exploration program

The discovery potential of the Opinaca B Property was strengthened by recent results for the adjacent Cheechoo Property, which include 15.61 g/t Au over 9.70 m, 15.04 g/t Au over 12.35 m and 12.08 g/t Au over 20.30 m (Sirios Resources press release of March 29, 2016).

The \$925,000 exploration program in 2017, funded and operated by Hecla, consisted of a 2,945-m (12-hole) diamond drilling program focused on multiple gold prospects (Dominic, 4 holes; Fishhook, 4 holes; D8, 2 holes; Eric, 1 hole) and the eastern extension of Claude (1 hole), along with ground magnetic and electromagnetic surveying (see Figure 2 and the press releases of June 19 and November 9, 2017). The best drilling result was 0.61 g/t Au over 30.7 m (starting in mineralization), including 2.38 g/t Au over 2.0 m and 3.21 g/t Au over 1.7 m. Detailed results are provided below. A follow-up work program including mechanical trenching is planned for 2018.

The **Dominic Prospect**, where the most significant results have been obtained, corresponds to a folded epidote-amphibole-quartz-feldspar vein hosted in metasediments close to a felsic intrusion. Starting in mineralization, hole OP-17-51 intersected 0.61 g/t Au over 30.7 m in a chloritic breccia, including two higher grade intervals: 2.38 g/t Au over 2.0 m and 3.21 g/t Au over 1.7 m. These results warrant additional evaluation during the next field program, including trenching. The **Fishhook Prospect** is a magnetic anomaly related to an iron-rich sedimentary unit. Drill targets correspond to possible alteration zones and faulting. Hole OP-17-49 returned 1.06 g/t Au over 1.5 m related to a fault zone. The **D8 Prospect** corresponds to an arsenopyrite-tourmaline-rich shear zone (0.55 g/t Au over 4.0 m in previous trenching) and to amphibolite-hosted quartz veins (2.3 g/t Au over 1.0 m). No significant values were obtained in the two holes. At the **Eric Prospect** and the eastern extension of the **Claude Prospect**, only marginal values were obtained in the two holes.

Previous exploration programs

In 2016, Hecla conducted a \$756,000 exploration program consisting of prospecting (548 rock grab samples), mechanized stripping in six different areas, and channel sampling along 10 channels for a total length of 202.2 metres (press release of January 23, 2017). A total of 12 grab samples returned values higher than 0.1 g/t Au, including 1.4 g/t Au and 1.1 g/t Au from outcrops (Dominic Prospect), and 1.4 g/t Au from a boulder (Fishhook Prospect). These anomalous values are generally associated with metasediments and paragneisses carrying sulphides and/or

magnetite. A total of 9 channel samples returned values higher than 0.1 g/t Au in metasediments, including 1.8 g/t Au over 0.75 m and 1.2 g/t Au over 1.0 m from the Dominic Prospect.

In 2015, Hecla conducted a \$394,000 exploration program comprising 40.5 line-kilometres of ground magnetic surveying, 21.8 line-kilometres of induced polarization (“IP”) surveying, a prospecting program (473 rock grab or float samples; 96 soil samples), and a trenching program (153 channel samples from 6 sites) (press release of November 25, 2015). Results outlined a 150- to 200-metre-wide package of IP anomalies in the D8 Prospect area where anomalous gold values had been obtained (up to 0.11 g/t Au). The best prospecting result was 3.0 g/t Au from a boulder of chloritized wacke with quartz-feldspar-tourmaline veinlets.

In 2012, field work led to the discovery of the abovementioned D8 Prospect, along with the Eric and Penelope prospects. The work program comprised 622 line-kilometres of magnetic-EM surveying, 684 soil samples, 243 rock grab samples, 290 channel samples from 258.35 metres of channels, and 93 till samples. The trench on the D8 Prospect, which was identified by gold anomalies in soil and till, displays a 20-metre-wide sheared and altered sedimentary unit with amphibolite and quartz-tourmaline veinlets. Best channel sampling results include 2.3 g/t Au over 1.0 m and 0.55 g/t Au over 4.0 m. The Eric Prospect yielded eight grab sample values above 0.1 g/t Au, including two above 0.5 g/t Au, within a kilometre-scale arsenic-gold soil geochemistry target. Mineralization is typically related to calc-silicate altered sediments and arsenopyrite-tourmaline-bearing pegmatites. The Penelope Prospect yielded ten grab sample values above 0.1 g/t Au, including four with values above 0.5 g/t Au up to 4.26 g/t Au. Mineralization is associated with quartz-tourmaline veins and veinlets.

Azimut’s earlier work on the Opinaca B Property included drilling and prospecting on the Claude and Dominic prospects (press releases of August 9 and December 7, 2007, and September 2, 2008). At the Claude Prospect, drilling yielded an intersection of 0.22 g/t Au over 187 m (including 1.0 g/t Au over 21.5 m), two grab samples returned 5.8 g/t Au and 4.3 g/t Au, and a channel sample graded 2.4 g/t Au over 0.5 m. Mineralization is associated with quartz-tourmaline veins and veinlets. Diamond drilling on the Dominic Prospect yielded 0.6 g/t Au over 1.2 m, and grab samples returned 6.1 g/t Au, 4.5 g/t Au and 1.7 g/t Au in pyritized, silicified and chloritized metasedimentary rocks with quartz and pegmatite veins.

As at November 30, 2017, Hecla had made cumulative cash payments of \$580,000 (\$580,000 – Q1 2017) and had carried out a total of \$6.0 million in work expenditures. Azimut has received \$290,000 (\$290,000 – Q1 2017) in cash payments, reflecting its 50% interest in the property. Hecla’s fulfilment of its obligations to earn its 50% interest in the property is subject to the Company’s validation.

Eleonore South Property

The Eleonore South Property (282 claims, 147.6 km²) is located in a highly prospective part of the Eleonore mining camp, about 10 km south of Goldcorp’s Eleonore gold mine.

The Eleonore South Property (Figure 2) is covered by a three-party agreement between Azimut, Les Mines Opinaca Ltée (a wholly-owned subsidiary of Goldcorp) and Eastmain Resources (see *Ownership* for details). Part of the property (116 claims; 60.3 km²) is subject to a royalty agreement signed with Goldcorp, Les Mines Opinaca Ltée (formerly Virginia Gold Mines Inc.) and Osisko Exploration James Bay Inc. (formerly Virginia Mines Inc.). A major exploration program was carried out in 2016–2017, including over 9,650 metres of diamond drilling, and another drilling phase will commence early next year as part of the \$3.9 million 2017–2018 program (see details below). Azimut is operator of both programs.

Summary of gold potential and mineralization

Exploration work since 2016 has demonstrated the presence of a gold-bearing corridor 4 kilometres long by 500 metres wide (the “**Prospective Corridor**”), related to a hydrothermally altered tonalite intrusion and its contact with metasediments. Two main target types stand out within the tonalite intrusion:

- 1) A high-grade gold-bearing quartz-feldspar pegmatitic vein system with native gold (“Moni-type”). The extent and geometry of this mineralized system remain largely undefined, but surface results at the Moni Prospect clearly indicate the potential for grade and geometric continuity.

- 2) Kilometre-scale zones of considerable width, characterized by a quartz-albite-biotite stockwork or a network of quartz-albite veinlets of variable density, with small amounts of sulphides (arsenopyrite, pyrite, and pyrrhotite) and frequent native gold.

Both types are interpreted to be part of an extensive late-magmatic hydrothermal system related to the tonalite intrusion. In this geological environment, the surrounding metasediments may also constitute potential targets where favourable lithological and structural settings are present. The intrusion-hosted mineralization on Eleonore South is similar in type and age to the sparse high-grade quartz-feldspar-arsenopyrite-pyrrhotite-visible gold veins that grade into pegmatitic material near the Eleonore deposit (close to a monzonite intrusion just north of the deposit). The mine's mineralized pegmatite is the same age as Eleonore South's tonalite (2.62 billion years).

Significant drilling results obtained during the 2016 and 2017 programs within the Prospective Corridor are reported below. The "**Moni Trend**", a 1.8-km-long high-potential NE-SW exploration trend, was identified within the Prospective Corridor (Figure 4), and includes the Moni, 101 and Trench prospects. It is highlighted by strong gold-arsenic anomalies in soil, and an apparent correlation with a NE-SW magnetic trend (Figure 5).

The **Moni Prospect** is characterized by an intrusion-hosted high-grade gold-bearing quartzo-feldspathic vein system up to 6 metres wide over a strike length of 36 metres, oriented NE-SW and open along strike. Following mechanical stripping and channel sampling, the key features can be described as follows:

- The high-grade gold vein system is related to a larger network of quartz-feldspar veins and veinlets hosted in strongly altered tonalite. Mineralized facies vary laterally from grey or black quartz veins to a quartzo-feldspathic pegmatite carrying trace to 1-2% sulphides (mostly arsenopyrite with lesser pyrite, pyrrhotite), and small amounts of tourmaline and scheelite. Alteration minerals are silica, albite, biotite and chlorite;
- 345 native gold grains have been observed in 42 of the 82 channel samples (see below for more details);
- The tonalite is pervasively altered (albite, silica) and displays a network of regularly spaced quartz veins and veinlets with feldspathic selvages (sheeted veins);
- The NE-SW-trending gold-bearing system is deformed: it shows some evidence of folding and is roughly parallel to the steeply dipping foliation trend.

The **101 Prospect** is located 400 metres to the southwest of the Moni Prospect. Mineralization is related to a network of quartz-feldspar pegmatitic veins and veinlets carrying native gold in strongly altered tonalite, striking NE-SW with a subvertical dip. Previous outcrop sampling returned up to 101 g/t Au.

The **Trench Prospect** is located 650 metres to the southwest of the Moni Prospect (250 m to the southwest of the 101 Prospect). The very high-grade samples (up to 1,500 g/t Au) correspond to angular boulders of quartz-feldspar (biotite) pegmatitic veins with native gold. These samples may correspond to a larger dismantled boulder. Mineralized tonalite boulders with arsenopyrite are also found in close proximity. Previous prospecting returned 247 g/t Au from a boulder in the same area, which is marked by a strong gold-arsenic soil anomaly. It is believed these mineralized boulders come from a nearby source.

Previous field work (prospecting, geophysics, trenching and drilling) focused on the **JT Prospect**, 2.5 kilometres to the west of the Moni Prospect. The JT Prospect is characterized by altered, sulphide-bearing metasedimentary rocks comparable to those of the Eleonore mine. Drilling and trenching defined wide intervals of gold-bearing sedimentary rocks along a 1-kilometre corridor and a gold halo measuring 1.2 kilometres by 100 metres, comparable in nature to the geochemical halo surrounding the Eleonore orebody. The best channel result was 5.3 g/t Au over 8 m, and the best diamond drilling results were 1.5 g/t Au over 5.7 m in 2008, and 1.40 g/t Au over 10.0 m in 2009.

Finally, a new gold prospect, the **FD Prospect**, has been discovered along the tonalite-metasediment contact at the northern end of the property. A smaller east-west linear tonalitic body in the southern part of the property is in contact with metasedimentary country rocks over a distance of 6.1 kilometres, characterized by strong gold and/or arsenic anomalies roughly coincident with this intrusive body.

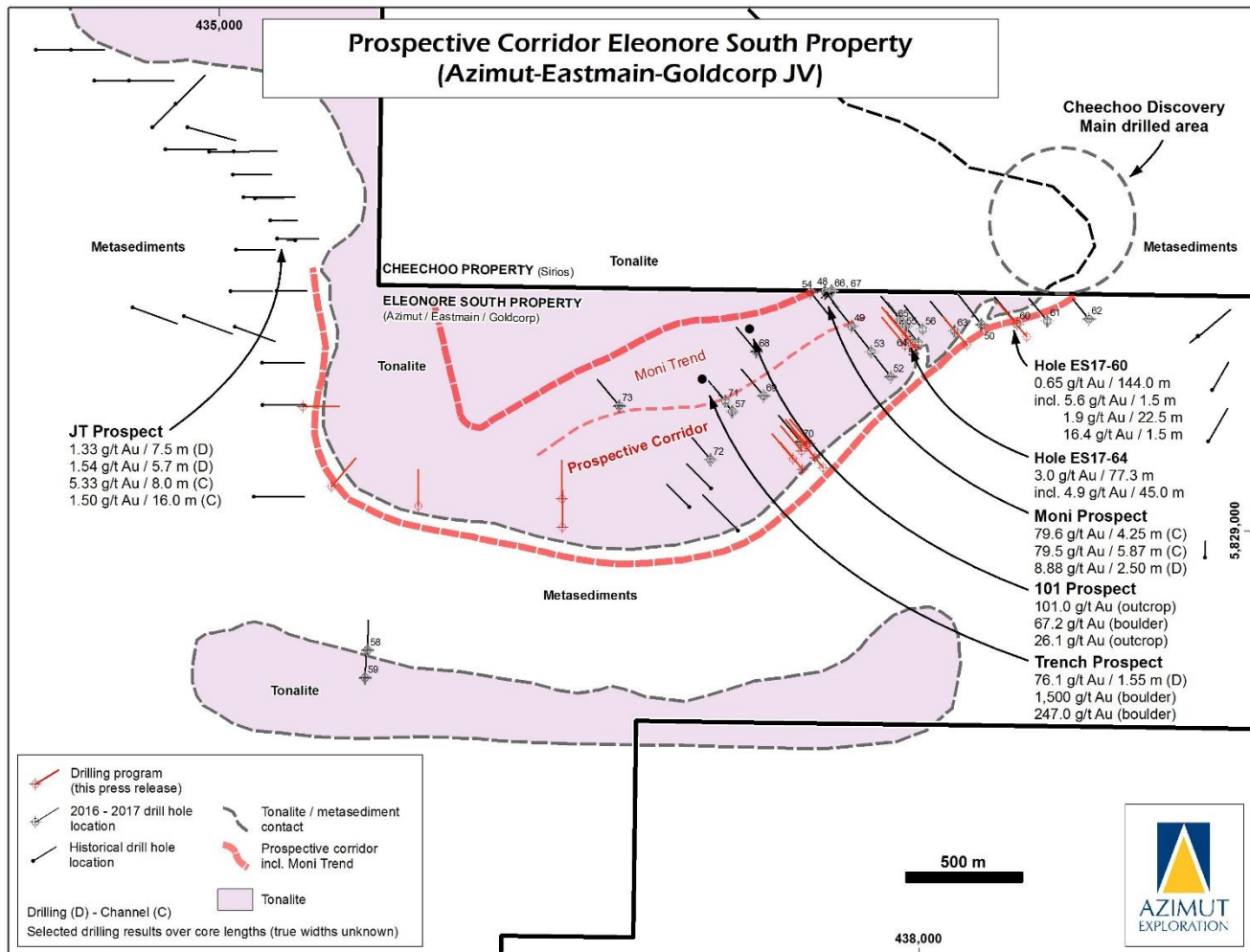


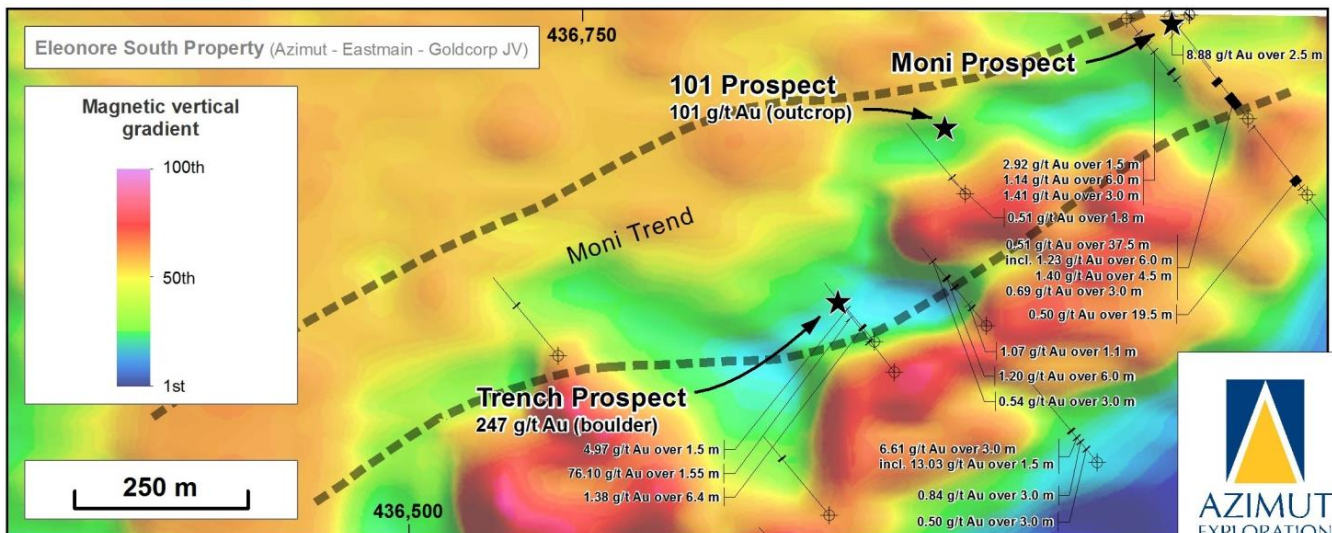
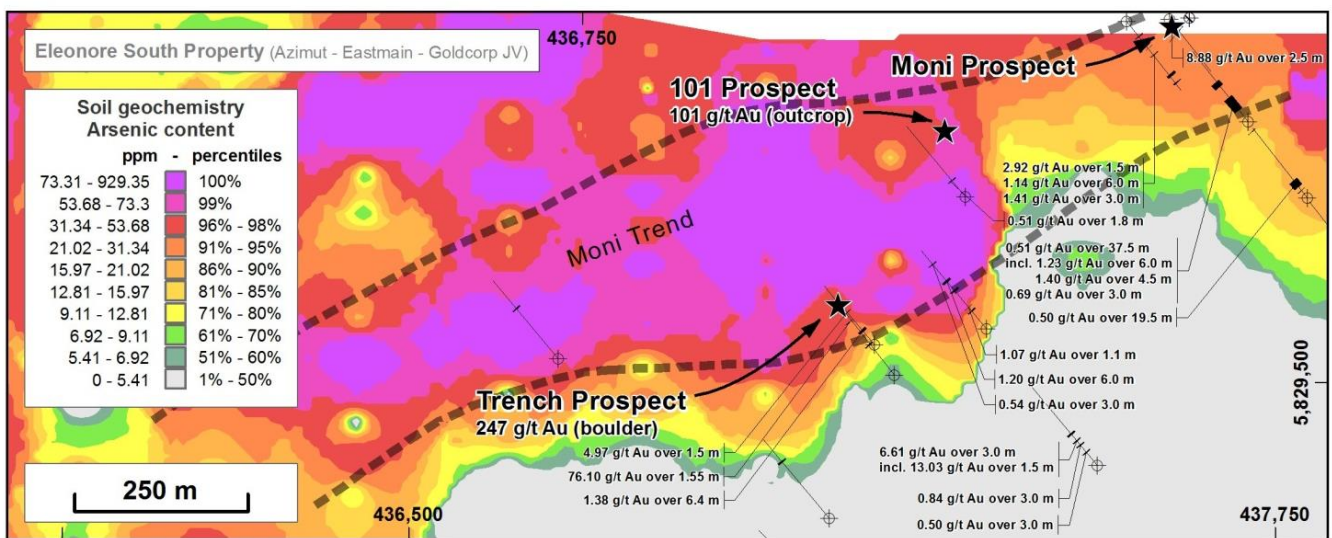
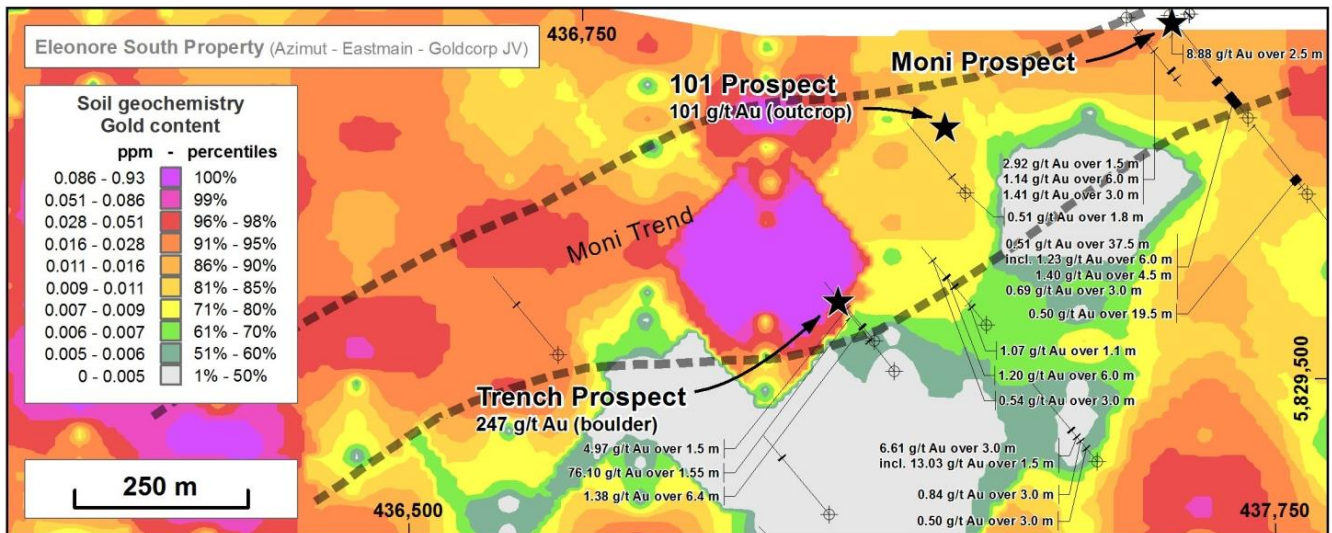
Figure 4: Highlights of results from the 2016–2017 diamond drilling and surface sampling program investigating Prospective Corridor on the Eleonore South Property.

Discovery on adjacent property

Results from Sirios’ adjacent Cheechoo Property (Figure 4) suggest a probable continuity of the mineralized system with Eleonore South (Azimut press releases of January 22, March 3 and March 30, 2016). Some of the Cheechoo holes were collared as close as 12 metres from the Eleonore South boundary, and results included the following: 11.9 g/t Au over 13.5 m in hole CH-17-95 (including visible gold in an interval of 2.1 m grading 65.1 g/t Au), 15.61 g/t Au over 9.70 m and 15.04 g/t Au over 12.35 m in hole CH-15-20, and 12.08 g/t Au over 20.30 m in hole CH-16-52 (Sirios press releases of March 6, 2017 and March 29, 2016).

Results of recent joint exploration programs

The Eleonore South Property has been the subject of two major exploration programs. The \$2 million 2016–2017 program comprised diamond drilling, channel sampling and detailed prospecting (press release of June 16, 2016). The positive results (see below) led to the announcement of a \$3.9 million program for 2017–2018, consisting of 8,000 metres of diamond drilling guided by a heliborne high-definition magnetic survey (980 line-km at 25-m line spacing), stripping, lake-bottom geochemistry and prospecting (press release of August 9, 2017). The main objectives are to assess the grade and geometric continuity of the best drill intercepts; continue drill-testing the prospective corridor from the JT Prospect to the boundary of the Cheechoo Property; and identify additional drill targets based on property-wide geochemistry and geophysical data. Phase 1 of the drilling program was completed in October (18 holes totalling 4,443 metres), and Phase 2, comprising another 3,600 m, will begin early next year following a full assessment of Phase 1 results. Azimut remains the operator.



Press release dated October 17, 2017



Figure 5: Inferred corridor and kilometre-scale potential of the Moni Trend shown on background maps (top to bottom) of gold and arsenic soil contents and the magnetic vertical gradient.

Drilling results

The 2016–2017 diamond drilling program (26 holes, 5,243 m) ran from September 2016 to April 2017 and the results were announced in press releases dated November 3 and November 21, 2016 and May 2 and 30, 2017. The Phase 1 of the 2017-2018 diamond drilling program (18 holes, 4,443 m) ran from August to October 2017 and the results were issued in a press release dated December 12, 2107. The 2016-2017 drilling focused on the Prospective Corridor, whereas Phase 1 of the 2017-2018 program followed up on the best results, and also tested the eastern and western extensions of the corridor. The best drill intercept was 4.9 g/t Au over 45.0 m in hole ES17-64.

Significant drilling results are as follows (Figures 4, 5 and 6):

- Hole ES16-48: 8.88 g/t Au over 2.5 m
- Hole ES16-49: 0.51 g/t Au over 37.5 m
0.51 g/t Au over 14.0 m
- Hole ES16-50: 0.58 g/t Au over 13.5 m
- Hole ES16-51: 0.62 g/t Au over 79.1 m, including:
5.0 g/t Au over 4.0 m
- Hole ES16-53: 0.50 g/t Au over 19.5 m
- Hole ES16-54: 2.92 g/t Au over 1.5 m
1.14 g/t Au over 6.0 m
- Hole ES16-55: 1.58 g/t Au over 12.0 m
0.59 g/t Au over 28.5 m
- Hole ES16-56: 2.84 g/t Au over 1.5 m
- Hole ES16-57: 76.1 g/t Au over 1.55 m
- Hole ES17-60: 0.65 g/t Au over 144.0 m, including:
0.52 g/t Au over 52.5 m
5.59 g/t Au over 1.5 m
1.89 g/t Au over 22.5 m
0.52 g/t Au over 16.5 m
- Hole ES17-61: 0.91 g/t Au over 16.5 m
- Hole ES17-62: 0.93 g/ Au over 4.1 m
- Hole ES17-63: 1.06 g/t Au over 3.4 m
- Hole ES17-64: 3.05 g/t Au over 77.3 m, including:
4.9 g/t Au over 45.0 m, which includes 13.0 g/t Au over 10.5 m
- Hole ES17-65: 1.10 g/t Au over 4.5 m
- Hole ES17-66: 1.10 g/t Au over 2.9 m
- Hole ES17-69: 2.01 g/t Au over 3.7 m
1.20 g/t Au over 6.0 m
- Hole ES17-70: 6.61 g/t Au over 3.0 m
- Hole ES17-71: 1.38 g/ Au over 6.4 m
4.97 g/t Au over 1.5 m
- Hole ES17-74: 0.45 g/t Au over 87.0 m, including:
0.88 g/t Au over 21.0 m
- Hole ES17-75: 0.49 g/t Au over 63.0 m, including:
0.94 g/t Au over 10.5 m
- Hole ES17-77: 1.46 g/ Au over 45.5 m, including:
23.1 g/t Au over 1.5 m
0.53 g/t Au over 106.0 m, including:
11.69 g/t Au over 1.5 m
- Hole ES17-78: 0.51 g/t Au over 17.1 m
- Hole ES17-80: 0.65 g/t Au over 147.5 m, including:
1.11 g/t Au over 6.0 m
6.13 g/t Au over 9.0 m, which includes 22.9 g/t Au over 1.5 m
- Hole ES17-81: 5.93 g/t Au over 1.5 m
- Hole ES17-85: 22.4 g/t Au over 1.2 m
- Hole ES17-87: 0.49 g/t Au over 76.5 m, including:
0.54 g/t Au over 49.5 m, which includes 1.12 g/t Au over 4.5 m

- Hole ES17-88: 1.53 g/t Au over 6.0 m
3.15 g/t Au over 24.0 m, including:
13.53 g/t Au over 3.0 m and 19.3 g/t Au over 1.50 m
- Hole ES17-89: 1.04 g/t Au over 6.2 m
0.57 g/t Au over 19.5 m
- Hole ES17-90: 0.49 g/t Au over 123.5 m, including:
4.45 g/t Au over 4.5 m, which includes 12.35 g/t Au over 1.5 m
1.04 g/t Au over 6.0 m
- Hole ES17-91: 0.61 g/t Au over 15.0 m, including:
1.17 g/t Au over 4.5 m

Surface sampling results

The channel sampling results reported below (press release of October 17, 2017) were obtained on the Moni Prospect following mechanical stripping that significantly enlarged the previous exposure (press release of November 3, 2016). Channel sampling in the newly exposed area comprised 82 samples with a cumulative length of 64.95 metres. The best composites were 79.6 g/t Au over 4.25 m and 79.5 g/t Au over 5.87 m. Individual sample results and composite intervals are presented on Figure 7. The 17 regularly spaced channels were generally cut perpendicular to vein strike. True width appears to range from 70% to 100% of apparent surface width. Reported gold values are uncut. Average sample weight is 3.75 kilograms.

From northeast to southwest, the best composite intervals are (Figure 7):

- Channel 05-05': 24.2 g/t Au over 3.80 m
- Channel 01: 79.5 g/t Au over 5.87 m
- Channel 07: 51.4 g/t Au over 5.30 m
- Channel 08: 53.8 g/t Au over 4.55 m
- Channel 08': 40.0 g/t Au over 1.85 m
- Channel 09: 13.5 g/t Au over 4.80 m
- Channel 10: 79.6 g/t Au over 4.25 m
- Channel 11: 28.1 g/t Au over 2.95 m

Another vein, located about 15 metres southeast from the vein described above, returned the following composite intervals:

- Channel 16: 47.1 g/t Au over 7.70 m
- Channel 17: 35.6 g/t Au over 1.35 m

A total of 20 grab samples were collected during the most recent prospecting phase, which focused on the 101 and Trench prospects along the Moni Trend (press release of November 16, 2017). The best grab samples yielded very high grades: from 833 g/t Au to 1,500 g/t Au on boulders and up to 26.1 g/t Au on outcrops. These results may represent the direct strike continuity of the high-grade Moni Prospect discovery announced on October 17, 2017. Previously, the best prospecting grades on the property were 142.0 g/t Au (Moni Prospect) and 247.0 g/t Au (sub-angular boulder in a trench near hole ES16-57). Grab samples are selective by nature and unlikely to represent average grades. Eleven (11) rock samples assayed higher than 1.0 g/t Au, including eight (8) with grades above 15.0 g/t Au:

| <u>Grade</u> | <u>Location</u> | <u>Sample type</u> | <u>Sample number</u> |
|--------------|-----------------|--------------------|----------------------|
| 15.2 g/t Au | 101 Prospect | Subcrop | S657630 |
| 26.1 g/t Au | 101 Prospect | Outcrop | S657631 |
| 23.5 g/t Au | 101 Prospect | Outcrop | S657633 |
| 67.2 g/t Au | 101 Prospect | Boulder | S657638 |
| 833 g/t Au | Trench Prospect | Boulder | S657739 |
| 952 g/t Au | Trench Prospect | Boulder | S657740 |
| 1500 g/t Au | Trench Prospect | Boulder | S657741 |
| 992 g/t Au | Trench Prospect | Boulder | S657743 |

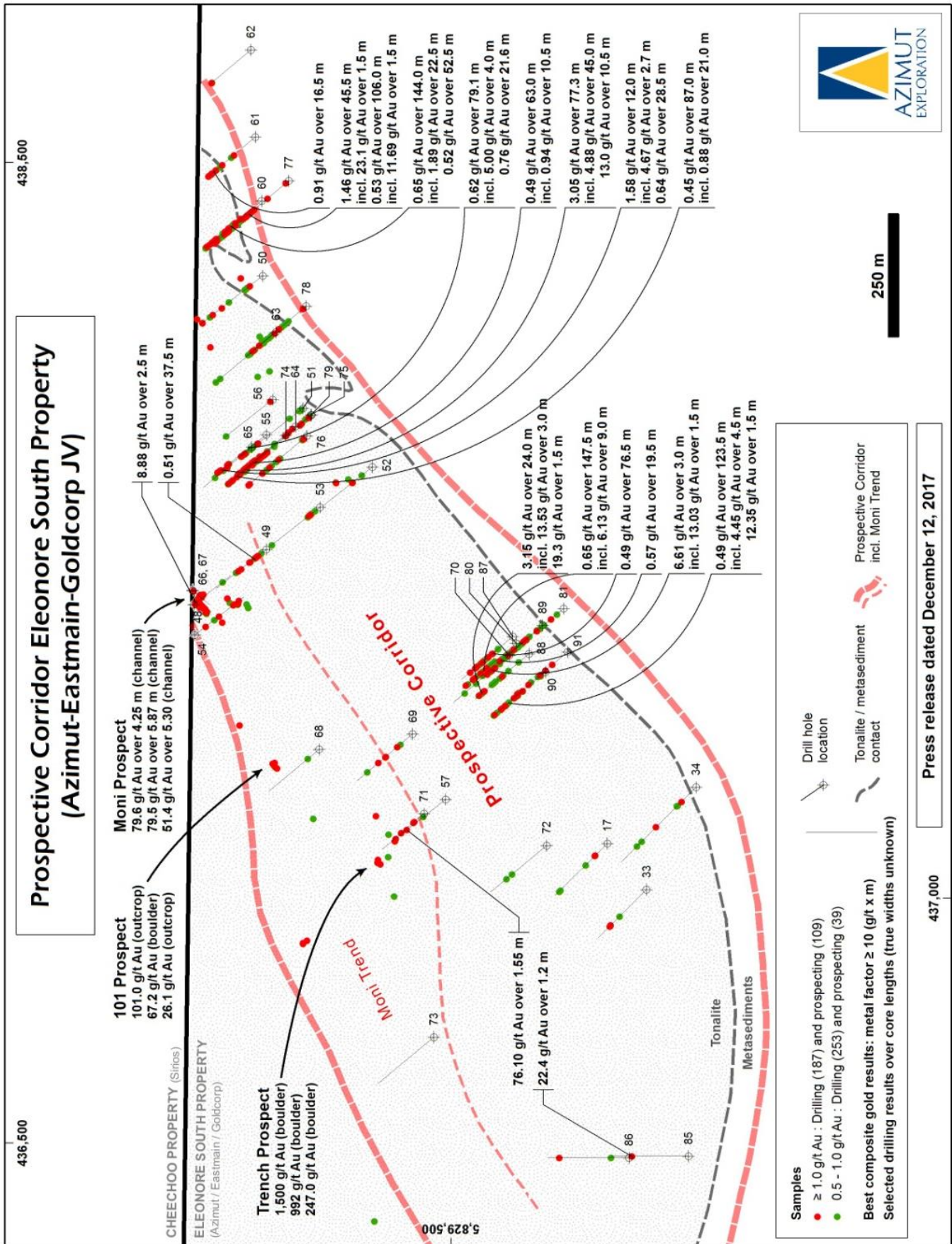


Figure 6: Details of selected composite drill results and high-grade surface samples (channel, grab and boulder) along the Prospective Corridor, Eleonore South Property.

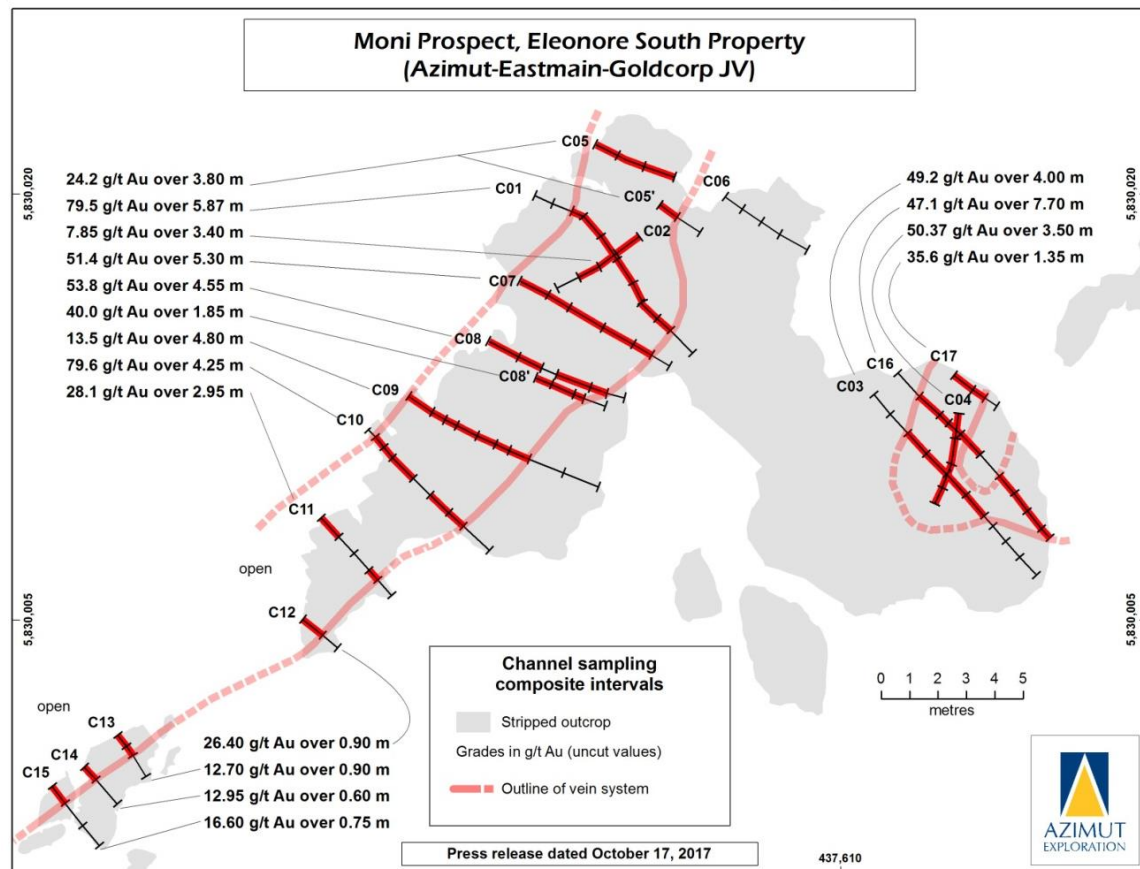
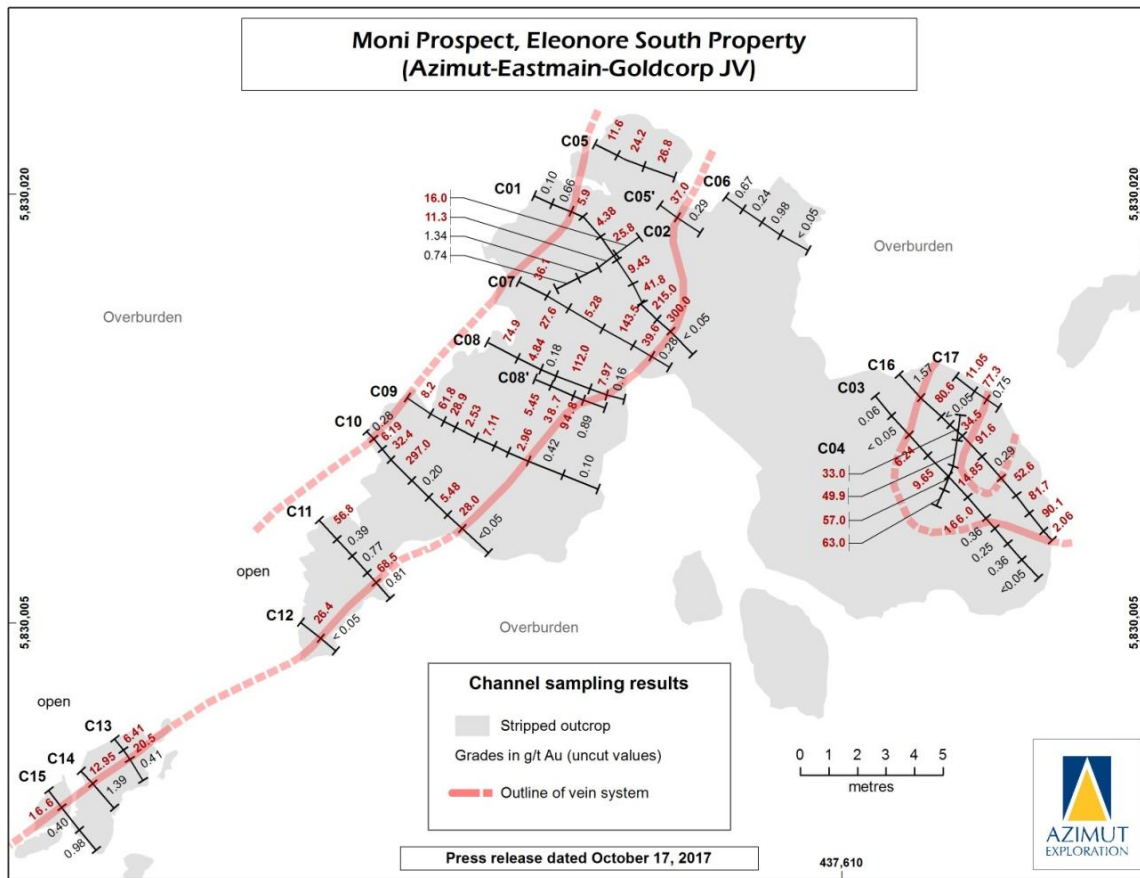


Figure 7: Maps of the Moni Prospect showing individual channel sample results (top) and composite intervals (bottom).

Details of the Eleonore South footprint and targeting approach

In early 2016, Azimut conducted a rigorous interpretation and comparison of the geochemical footprints for the Eleonore South Property and the Eleonore gold mine. Extensive, consistent and strong coincident gold and arsenic anomalies (higher than 90th percentile) were outlined in B-horizon soil samples on Eleonore South (press release of March 30, 2016). In most cases, gold mineralization recognized by prospecting, trenching and drilling is spatially related to these soil anomalies (e.g., JT Prospect), and the Eleonore gold mine shows a comparable feature (Figure 8).

The example of the Eleonore mine footprint suggests little to no displacement of the gold-arsenic soil anomalies from their bedrock sources. Consequently, the areas with unexplored strong geochemical anomalies are considered to be top quality targets for potential near-surface discoveries.

The interpretation of all mapping and drilling results available at the time (early 2016) revealed broad, kilometre-scale alteration zones on Eleonore South. The main alteration types are silica (pervasive silicification, quartz veinlets, stockwork), aluminous (andalusite, sillimanite), potassic (microcline, biotite) and tourmaline. These areas appear highly prospective for gold mineralization given the Eleonore orebody shows comparable alteration signatures in its immediate vicinity.

Other features of the Eleonore South Property may have acted as traps for mineralization, such as a kilometre-scale iron formation, folded structures and shear zones, and the shape and dip of the main tonalitic intrusion, all of which require further study (press release of March 30, 2016).

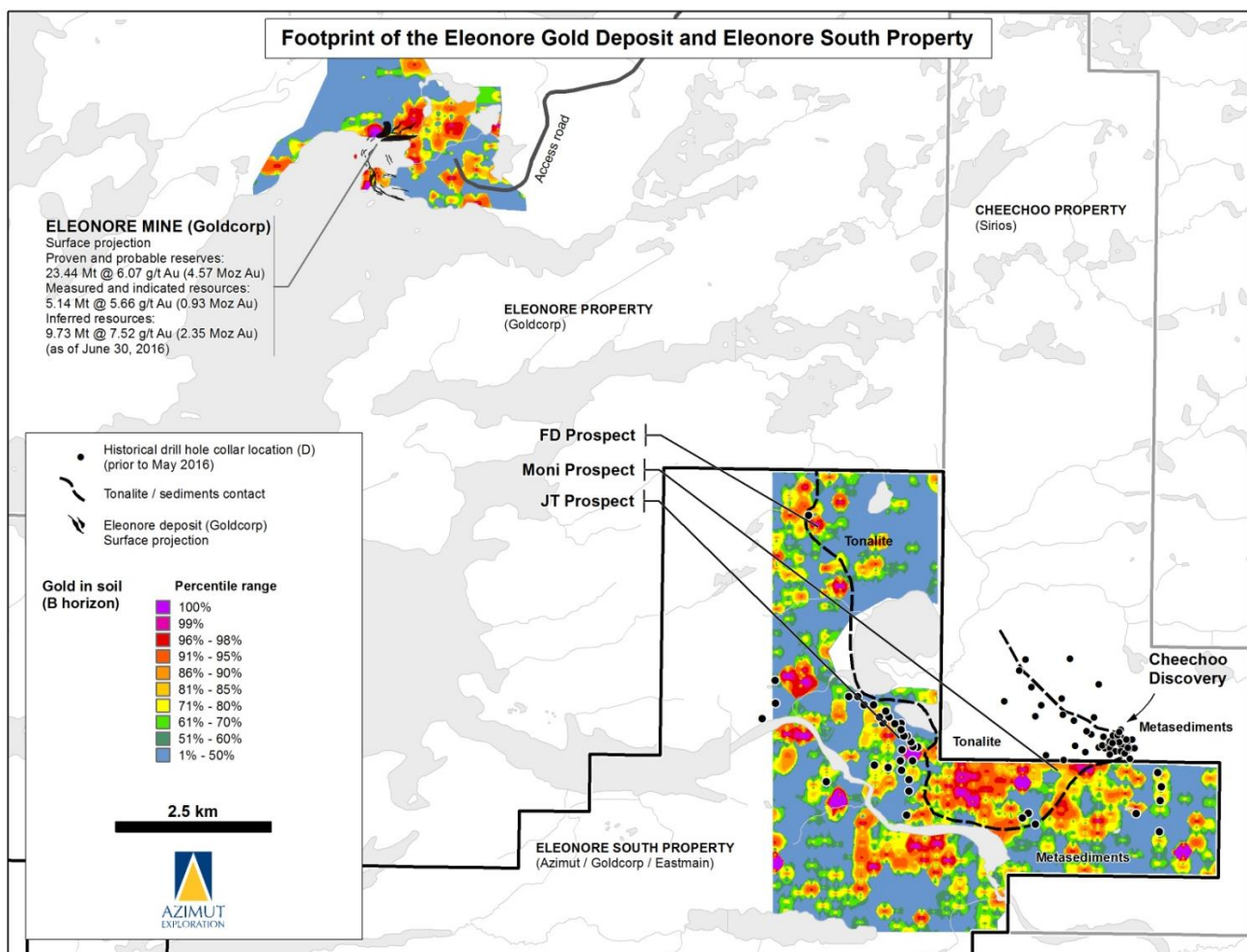


Figure 8: Map comparing the gold-in-soil footprints of Azimut’s Eleonore South Property and the neighbouring Eleonore gold mine (Goldcorp).

Ownership

The ownership of the Eleonore South Property is Azimut 26.57%, Goldcorp 36.71% and Eastmain Resources 36.72%. Azimut is the operator of the current \$5.9 million cumulative work program. Each of the joint venture participants elected to contribute their proportionate share of ownership in the work program. For Q1 2018, the cumulative cost incurred under the 2016–2017 work programs amounted to \$4.099 million to cover exploration work (prospecting, geophysical interpretation and drilling) and building the exploration camp. The allocation of expenditures was as follows: Azimut \$1,089,000, Goldcorp \$1,505,000 and Eastmain Resources \$1,505,000.

Opinaca D Property

The Opinaca D Property (165 claims in 1 block, 86.0 km²) lies about 8 kilometres northwest of Goldcorp's Eleonore Property (see Figure 2).

Exploration on the Opinaca D Property began in 2005 and has included reconnaissance geological mapping and prospecting over a number of exploration targets defined by VTEM and/or soil geochemistry anomalies. Soil geochemistry surveys confirmed a broad trend of gold, arsenic and antimony anomalies, with respective maximum values of 7.32 g/t Au, 447 ppm As and 2.3 ppm Sb. The strong gold-arsenic-antimony soil anomalies have not yet been tested by drilling. Several drill targets have been defined on the project.

For Q1 2018, Azimut did not incur any claim renewal expenditures (\$5,000 – Q1 2017), but did incur \$100 (\$15,000 – Q1 2017) in exploration work for data interpretation.

EASTMAIN RIVER AREA

The Eastmain River area is 290 kilometres north of Chibougamau and about 80 kilometres southeast of the Opinaca Reservoir. The area contains the Eau Claire (Clearwater) gold deposit belonging to Eastmain Resources, which announced a 43-101 compliant estimate of measured and indicated resources of 4.17 Mt at 6.16 g/t Au for 826,000 ounces gold, and inferred resources of 2.227 Mt at 6.49 g/t Au for 465,000 ounces gold (as of August 25, 2017, Eastmain Resources website).

Wabamisk Property (gold)

Azimut acquired the Wabamisk Property in 2004 based on the results of its regional-scale gold potential modelling of the entire James Bay region. Wabamisk comprises 470 claims for a total surface area of 248.7 km². Eight (8) of the claims are subject to a 2.1% NSR payable to Virginia Mines (1.4%) and SOQUEM (0.7%), with a buy-back of 1.05% for \$350,000. The property is located about 70 kilometres south of Goldcorp's Eleonore gold mine, and has a comparable geological context and geochemical signature.

In 2011, Azimut announced that Goldcorp earned its 51% interest in the Wabamisk Property. Later that year, Goldcorp elected to pursue its second option on the property, whereby it can earn a 70% interest by funding additional exploration work and completing a bankable feasibility study within ten (10) years.

Recent exploration highlights

On November 30, 2017, Azimut announced that Goldcorp had commenced a heliborne geophysical survey on the Wabamisk Property. The SkyTEM electromagnetic survey with a line spacing of 100 metres and a total coverage of 3,322 line kilometres, is being performed by Geo Data Solutions Inc. The objective is to enhance target definition on the project by delineating high-quality conductors. The \$325,000 budgeted for this phase of work is funded by Goldcorp.

In 2015, Goldcorp funded a \$103,000 IP survey program following the 2014 targeting phase that identified altered shear zones warranting additional work. Significant results from the 2014 program (geological mapping and 195 grab samples) included the following: 2.42% Cu, 0.41 g/t Au and 23.6 g/t Ag (grab sample); 1.42% Cu and 7.1 g/t Ag (grab sample); and 1.01% Cu, 0.67 g/t Au and 9.1 g/t Ag (boulder) (press release of March 19, 2015).

Pre-2014 exploration programs

Initial exploration in 2005 identified several major gold target areas that included most of the known historical gold showings. A soil geochemistry survey in 2006 was followed by prospecting, mapping, geophysical (IP) surveying, and soil and rock sampling in 2007–2008. The 2009 program tested several quality gold targets in the eastern half of the Wabamisk Property through soil sampling, prospecting, grab and channel sampling, and an initial diamond drilling program that mainly intersected sulphides or graphite with little or no gold.

In 2010, Goldcorp completed an 8-hole (2,800 m) diamond drilling program that identified two main prospective areas for gold in the western half of the property. At the **GH Prospect**, the best intercept in six (6) holes yielded 2.3 g/t Au over 4.3 m within a large envelope defined by an interval of 0.7 g/t Au, 0.39% Sb and 0.20% As over 19 m. This gold-antimony-arsenic zone is associated with a diorite intrusion and metasedimentary rocks. Mineralization is marked by Sb and As sulphides as disseminations and veinlets accompanied by sericitization and silicification. The area forms a target zone 3.5 kilometres long, outlined by coincident soil (Sb, As) and geophysical (IP) anomalies. The alteration and mineralization footprint indicates a strong exploration potential along strike and at depth. The second prospective sector, the **Dome-ML Prospect**, is 1.7 kilometres long and yielded several historical high-grade gold values (up to 80.7 g/t Au) in grab samples taken from sheared and altered mafic volcanic units and a dioritic intrusion.

In 2012 and 2013, Goldcorp funded work programs that included a soil geochemistry survey (3,890 samples), prospecting (456 grab samples) and a high-resolution helicopter-borne magnetic survey (3,502 line-km). These programs led to the discovery of a new prospective area in the western part of the property, where prospecting returned 12.45 g/t Au in a quartz vein grab sample and a soil survey yielded several significant gold anomalies.

Eastmain West Property (chromium-PGE)

The wholly-owned Eastmain West Property (81 claims, 42.9 km²) is located close to major infrastructure (permanent roads, power lines, airports), 45 kilometres northeast of the municipality of Nemaska and 35 kilometres north of the Whabouchi mining project (Nemaska Lithium). The exploration focus is chromium (Cr) and platinum group elements (PGE). Chromite is the ore mineral of chromium. Chromium's high resistance to corrosion and very high melting point make it a key element in the production of stainless steel and heat-resistant steel.

The Eastmain West Property offers significant exploration and development potential for a large chromite deposit based on the following:

- A strategic location in a highly accessible region with major infrastructure nearby, with access to seaborne shipping via James Bay;
- Chromite mineralization and accompanying PGE values are related to a multi-kilometre target hosted by an ultramafic intrusion with a strong magnetic, electromagnetic and gravity footprint;
- Quebec is recognized as one of the best mining jurisdictions worldwide, and has built constructive relationships with local communities, including First Nations communities;
- No chromite producers in North America and a favourable global market.

Mineralization, mineralogy and geological context

Chromium mineralization at Eastmain West occurs as disseminated to massive chromitite horizons hosted in ultramafic facies (dunite, harzburgite) within a 4-kilometre-long ultramafic intrusion. The initial outcrop discovery was made in 2010 during a self-funded exploration program.

Mineralization occurs as two main rock types (press release of May 19, 2011): (i) an ultramafic facies; and (ii) a chromite-rich facies in dykes or sills. Prospects have been identified that represent each type of mineralization: the **Sledgehammer Prospect**, which can be traced for 100 metres within a magnetic high measuring 200 metres by 900 metres, and the **Dominic Prospect**, which occurs in a magnetic low.

A preliminary mineralogical study indicated very coarse chromite grains in a magnesium-rich aluminosilicate matrix (press release of May 19, 2011). Consequently, a primary grind should be sufficient to easily liberate the chromite from the silicate gangue. A subsequent mineralogical study of the chromite grains indicated a Cr₂O₃ content of 44.5% and Cr/Fe ratios ranging from 1.63 to 2.4 (press release of January 19, 2017).

The geological context and mineralization of the Eastmain West Property (also described as the Lac Fed area) share many common features with the chromitite-bearing intrusions of the Ring of Fire in Northern Ontario, as highlighted by several independent studies, including one from the Geological Survey of Canada (Open File 7856, 2015).

2016-2017 exploration program

In early 2017, Azimut completed a self-funded ground gravity survey (press releases of February 21 and May 8, 2017) to investigate the potential of the main target zone in the central part of the intrusion, where prospecting results reached 17.21% Cr₂O₃ over 7.54 m, including 33.2% Cr₂O₃ over 3.55 m (see below), and to assess the property's potential for Ni-Cu-PGE massive sulphides, which are often present in this type of geological setting. More specifically, the objective was to characterize the footprint and extensions of the Dominic and Sledgehammer prospects within an area measuring 1,200 m long by 900 m wide. The gravity method is a proven geophysical tool for delineating the footprints of major chromite deposits in the Ring of Fire.

The residual gravity anomaly is 1.2 kilometres long and up to 200 m wide, and remains open to the north and south. The position of the anomaly is stratigraphically high in the intrusion and favourable for chromite sills. Inversion modelling was done to construct subsurface 3D models of possible causative bodies to explain the anomaly. The results suggest a body of significant strike, generally more developed below a depth of 50 m. It could reflect a subvertically dipping chromite body of substantial size, or disseminations or thin interdigitations of chromite within high-density host rocks (dunite, harzburgite).

In late fall 2016, a total of 73 rock samples were collected during a short prospecting program (press release of January 19, 2017), comprising 14 grabs and 59 channel samples (cumulative length of 53.10 m in 5 channels). The best interval was 33.2% Cr₂O₃ over 3.55 m. Channel lengths were limited by thick overburden and the presence of a creek.

Salient results are as follows:

- 17.21% Cr₂O₃ over 7.54 m, including 33.2% Cr₂O₃ and 0.41 g/t PGE (Pt, Pd) over 3.55 m (Dominic Prospect, channel 3). The best result along this channel is 40.24% Cr₂O₃ over 1.55 m;
- 5.13% Cr₂O₃ over 22.49 m, including 23.1% Cr₂O₃ over 0.55 m, 19.57% Cr₂O₃ and 0.20 g/t PGE over 2.60 m (Sledgehammer Prospect, channel 1);
- 8.59% Cr₂O₃ over 6.54 m, including 17% Cr₂O₃ and 0.22 g/t PGE over 1.18 m, 22.5% Cr₂O₃ and 0.14 g/t PGE over 0.98 m (Sledgehammer Prospect, channel 2).

The next work program will consist of mechanical stripping and diamond drilling.

For Q1 2018, Azimut did not incur any claim renewal expenditures (\$3,000 – Q1 2017), but did incur \$1,400 (\$38,000 – Q1 2017) in data interpretation.

AZIMUT-SOQUEM STRATEGIC ALLIANCE

On September 26, 2016, Azimut announced it had formed a Strategic Alliance (the “Alliance”) with SOQUEM, a subsidiary of Investissement Québec. The four-year Alliance covers a 176,300-km² surface area in the James Bay–Eeyou Istchee region of Quebec, and the objective is to identify, acquire and explore highly prospective gold targets. The main terms of the Alliance are summarized as follows:

- Azimut provided SOQUEM with a Target Report identifying major gold targets based on a systematic mineral potential analysis, including advanced processing of geoscientific data and subsequent validation steps;
- SOQUEM selected four (4) targets, which were converted into properties at SOQUEM's cost; initial ownership in the properties is 50% Azimut and 50% SOQUEM;
- SOQUEM has the option to reserve additional targets that can be converted into properties during the Alliance under the same conditions as above;

- On the first four (4) targets, SOQUEM has the option to acquire Azimut's interest by investing a total of \$3 million in exploration work over four (4) years, including diamond drilling; at this stage, Azimut will retain a 2% NSR royalty interest of which 0.8% can be bought back for \$800,000 in cash;
- On any additional targets, SOQUEM will also have the option to acquire Azimut's interest by spending \$750,000 per target over four (4) years; Azimut will benefit from the same royalty interest as described above;
- In the event that SOQUEM does not complete its minimum investment for a given target, the target will become a joint venture project;
- On any proposed target not retained by SOQUEM, Azimut will have the right to explore the target alone or with third parties; and
- Azimut is the manager of the Alliance.

Within the framework of the Alliance, the Munischiwan, Pikwa, Pontois and Desceliers properties were acquired by map designation and now comprise a total of 1,321 claims covering 679.6 km². Each partner owns a 50% interest in the projects. These properties display strong multi-element geochemical footprints for gold in lake-bottom sediments, along with favourable geophysical, geological and structural criteria. Historically, the properties have seen little exploration for gold.

Three of the four properties—Munischiwan, Pikwa and Pontois—are located in the Archean La Grande Subprovince and straddle significant strike lengths of prospective volcano-sedimentary belts (5 to 30 km) and their faulted contacts with the surrounding intrusive rocks, namely tonalite-granodiorite complexes. The Desceliers Property is underlain by Archean rocks of the Opinaca Subprovince.

Exploration programs

Azimut performed exploration work on the Alliance properties as follows (press release of November 2, 2017):

- A detailed lake-bottom sediment geochemical survey totalling 635 samples on Pikwa, Pontois and Desceliers, yielding 13 geochemical targets on the properties;
- A helicopter-borne magnetic and VTEMTMPlus electromagnetic survey totalling 838 kilometres of lines at 100-metre spacing on Munischiwan, yielded five (5) geophysical targets on the property; and
- A reconnaissance prospecting program yielding rock samples as follows: Pikwa (232), Pontois (225), Desceliers (193) and Munischiwan (249).

Property descriptions

The **Munischiwan Property** (120 claims, 62.9 km²) is located about 85 kilometres east of the Cree community of Eastmain, in an area serviced by road, power and airport infrastructure. The project covers part of the Lower Eastmain volcano-sedimentary belt. The property is marked by a well-defined As-Ag-Bi-Cu-Sb geochemical anomaly in lake-bottom sediments. A gold prospect (3.57 g/t Au and 1.37 g/t Au in a quartz-pyrrhotite vein) on strike with this lake-bottom anomaly is located about 800 metres from the property. The regional magnetic data indicate structural complexities (faults, two phases of folding) that could have acted as traps for gold mineralization. In 2017, Azimut completed a heliborne Mag-VTEMTMPlus survey over the property (838 line-km with 100-m spacing) following a detailed compilation study (press release of March 14, 2017). The interpretation identified five (5) geophysical targets on the property (press release of November 2, 2017).

The **Pikwa Property** (420 claims, 215.3 km²) is located 40 kilometres east of the LG-3 hydroelectric infrastructure and 2 kilometres south of the Trans-Taiga Road, a major gravel highway. Centered on a strong linear E-W-trending As-Bi-Cu-Sb-W lake-bottom sediment anomaly, it coincides with volcano-sedimentary rocks of the La Grande belt in thrust contact with tonalitic intrusions. Gold mineralization is known along strike, notably at the Golden Gap prospect (10.48 g/t Au over 7.0 m), located 4 kilometres east of the eastern boundary of the property.

The **Pontois Property** (418 claims in 2 claim blocks, 213.0 km²) is traversed by the Trans-Taiga Road, and lies immediately south of the LG-4 hydroelectric dam. It corresponds to a strong As-Sb-W signature in lake-bottom sediments. The volcano-sedimentary rocks and iron formations of the La Grande belt, the bounding tonalitic

intrusions, and the distribution of several regional faults and shear zones provide a favourable geological and structural setting. Coupled with the strong geochemical signature and clearly under-explored status, these features make for an attractive gold exploration target.

The **Desceliers Property** (363 claims, 188.4 km²) is located 175 kilometres east of provincial highway 167 that leads to the Renard mine (Stornoway Diamond Corp.). The property is characterized by a strong geochemical signature in Au-As-Cu-W in lake-bottom sediments. This area has seen minimal exploration in the past and very little is known about its geology. The geochemical footprint (an especially strong coincident Au-Cu association), the size of the anomaly, and the untested potential of the area make this target highly attractive.

For Q1 2018, SOQUEM funded a \$904,000 work program that included lake-bottom sampling on the Pikwa, Pontois and Desceliers properties, an airborne-geophysical survey on the Munischiwan property, and preliminary prospecting on all four (4) properties. The exploration work was conducted under Azimut's management. Interpretation of the results is underway.

OTHER PROPERTIES IN THE JAMES BAY REGION

Ten (10) wholly owned properties—Valore, Duxbury, Dalmas, Orsigny, Sauvolles, Synclinal, Corvet, Galinée, Kukamas East and Cawachaga—were acquired by map designation and comprise a total of 1,315 claims covering 682.2 km². Except for Valore and Cawachaga, the properties cover targets that were identified by the mineral potential modelling of the James Bay region under the Strategic Alliance with SOQUEM. These eight (8) properties are offered to SOQUEM for option according to the terms of the Alliance. For any retained property, SOQUEM will have the option to acquire Azimut's interest by investing \$750,000 per property over four (4) years. At this stage, Azimut will retain a 2% NSR royalty interest of which 0.8% can be bought back for \$800,000 in cash.

Exploration programs

On May 5, 2017, SOQUEM agreed to fund an exploration program on six Alliance properties: Galinée, Sauvolles, Dalmas, Orsigny, Synclinal (North and South blocks) and Corvet. As at August 31, 2017, Azimut owns a 100% interest in these properties and is manager of the \$247,000 work program, which is wholly funded by SOQUEM. The acquired data will be used to decide which properties will be retained for additional investment under the terms of the Alliance. The exploration work, carried out by Azimut, is summarized as follows (press release of November 2, 2017):

- A detailed 614-sample lake-bottom sediment geochemical survey on Galinée, Sauvolles, Orsigny, Dalmas and Synclinal (North and South blocks); and
- A reconnaissance prospecting program yielding 54 rock samples from Corvet.

On the Valore Property, which is not covered by the Alliance, Azimut carried out a preliminary infill lake-bottom sampling survey in 2008 that identified several strong gold anomalies (see results below) and a till survey and geological reconnaissance program in late fall 2016. Results are under review.

Property descriptions

The **Valore Property** (124 claims in 2 claim blocks, 64.8 km²) is located 185 kilometres east of the Renard mine, in the Opatica Subprovince. Most of the claims were formerly owned by Azimut. The property is in an area of poor geological coverage and very limited historical exploration. Azimut identified several strong gold anomalies in lake-bottom samples, including 2.13 g/t Au and 2.12 g/t Au.

The **Duxbury Property** (158 claims, 83.2 km²) is a highly accessible project, located 5 kilometres west of the James Bay Road, a paved highway, and about 70 kilometres east of the Cree community of Eastmain. The property is characterized by a well-defined As-Bi-Sb anomaly in lake-bottom sediments in the La Grande Subprovince. Gold showings are known along strike both to the east and west of the property, including some high-grade prospects (e.g., up to 176.6 g/t Au over 0.2 m about 9 km east of the property, and up to 113.4 g/t Au about 7 km to the west). Geological and magnetic data suggest a 10-kilometre-long corridor of prospective stratigraphy on the property.

The **Dalmas Property** (77 claims, 39.3 km²) is situated 25 kilometres south of the Trans-Taiga Road, a gravel highway, in the eastern part the James Bay region. The target is characterized by a strong As-Cu-Sb-W geochemical association in lake-bottom sediments in the La Grande Subprovince. This anomaly is underlain by a small metasedimentary belt in contact with intrusive bodies.

The **Orsigny Property** (46 claims, 23.6 km²), located 45 kilometres southwest of the Trans-Taiga Road, covers an As-Ag-Bi-Cu-Sb-W anomaly in lake sediments. In addition to favourable geochemistry, this under-explored area of the La Grande Subprovince has a favourable geological (mafic volcanics, intrusions) and structural context (folding) for gold mineralization.

The **Sauvolles Property** (150 claims, 77.0 km²), located 40 kilometres south of the Trans-Taiga Road, covers a strong As-Sb-W-Ba anomaly in lake-bottom sediments. This target corresponds to a narrow sheared greenstone belt in the La Grande Subprovince, bordered by intrusions. Past exploration is limited on the project, but gold potential is recognized along strike (several prospects with values up to 9.4 g/t Au about 15 km to the northeast).

The **Synclinal Property** (100 claims in 2 blocks, 52.5 km²) is located about 58 kilometres southeast from the Eleonore gold mine, in the Opinaca Subprovince and close to the contact with the La Grande Subprovince. The target is characterized by a Bi-Sb anomaly in lake-bottom sediments underlain by a monzonite body. This context presents some analogies with the environment of the Eleonore mine, thus enhancing the interest of the target.

The **Corvet Property** (72 claims, 37.0 km²) is located on the western shore of Lac de la Corvette, 55 kilometres southwest of the La Grande-4 airstrip (next to the Trans-Taiga Road), and 225 kilometres east-southeast of the town of Radisson. The project displays a strong spatial association between Ag-As-Bi-Cu-Sb in lake-bottom sediments. Several gold showings exist in the vicinity of property (Éch. 231203: 12.01 g/t Au; Eade-6: 11.45 g/t Au; Eade-5: 7.41 g/t Au, 3.08 g/t Au over 1.0 m (trench), 0.69 g/t Au over 1.0 m (drill core); and Eade-Till: 5.3 g/t Ag over 1.0 m, 113 gold grains in a till sample). The property is in the Opinaca Subprovince, 6 kilometres south of its contact with the La Grande Subprovince. The presence of numerous gold showings near the subprovince contact justifies the interest in this claim group.

The **Galinée Property** (413 claims, 213.1 km²) is located 85 kilometres southeast of the La Grande-4 airstrip, 330 kilometres east-southeast of the town of Radisson, and 385 kilometres NNE of the city of Chibougamau. The project is characterized by a multi-kilometric geochemical association between As-Sb-W in lake-bottom sediments. Several gold showings exist in the vicinity of property (Pankot's Palace: 5.09 g/t Au; Savon: 1.18 g/t Au; and many boulders containing up to 20.0 g/t Au). The property is in the La Grande Subprovince, about 15 kilometres north of the contact with the Opinaca Subprovince. The presence of numerous gold showings near the subprovince contact justifies the interest in this claim group.

The **Kukamas East Property** (70 claims, 35.8 km²) is located 20 kilometres east-northeast of the La Grande-3 airstrip (next to the Trans-Taiga Road), and 115 kilometres east-southeast of the town of Radisson. The project displays a strong Ag-As-Bi-Cu-Sb anomaly in lake-bottom sediments. Several Au-Cu showings exist in the vicinity of property (Tour Elle: 18.1 g/t Au; Girard-Dupras: 3.6 g/t Au over 1.0 m (channel); La Guiche Zone: 2.72 g/t Au; and Dune Zone: 2.2 g/t Au, 4.3% Cu). The property is in the La Grande Subprovince, 10 kilometres north of the contact with the Opinaca Subprovince, and 12 kilometres south of the contact with the Bienville Subprovince. The main feature of interest is the contact, about 4 to 5 kilometres long, between a tonalitic intrusion and a volcanic-sedimentary belt.

The **Cawachaga Property** (105 claims, 56.0 km²) is located about 140 kilometres east of the community of Nemaska and 100 kilometres east of the electrical substation of Poste Albanel along the James Bay Road. The property comprises 105 claims covering a strong zinc anomaly in lake-bottom sediments about 8 kilometres across.

NUNAVIK REGION

Management believes Nunavik (the region in Northern Quebec above the 55th parallel) has significant potential for large-scale deposits of copper, gold, silver, tungsten, rare earth elements (REE) and uranium. The results of Azimut's 640,000-km² mineral potential assessment generated many quality exploration targets in Nunavik, several of them

very large. The types of data used in the targeting process included multi-element lake-bottom sediment geochemistry, geophysics, geology and remote sensing. The Company's current land position comprises six (6) properties covering polymetallic or gold-only projects, and one (1) uranium property.

NUNAVIK – POLYMETALLIC

In 2009, Azimut identified very large and very strong geochemical footprints for copper and REE in Nunavik, Northern Quebec, and began acquiring the most significant targets that same year.

The Rex, Duquet, Rex South and NCG properties (collectively 2,142 claims; 925.1 km²) provide a commanding position over what the Company calls the **Rex Trend** (Figure 9), a strong 300-kilometre-long copper anomaly in lake-bottom sediments coupled with a strong 100-kilometre-long REE anomaly (press releases of March 31 and July 22, 2011). Management considers the Rex Trend to be a new mineral province with the potential to host large-scale deposits, including iron oxide copper-gold (“IOCG”) deposits, intrusion-related polymetallic deposits and sediment-hosted gold deposits. The Rex Trend shares similarities with the Carajás Mineral Province in Brazil (press release of April 4, 2012).

Azimut has gained a key exploration edge in the region by virtue of the work conducted by the Company and its partners on the Rex Trend properties: 21,379 line-kilometres of airborne geophysics, 6,226 infill lake-bottom sediment samples, 7,628 prospecting rock samples, and 7,070 metres of standard rotary percussion (“rotary”) and reverse circulation (“RC”) drilling in 82 holes.

Rex Property (copper-gold-REE)

The wholly-owned 80-kilometre-long polymetallic Rex Property (828 claims; 353.3 km²) occupies the northern segment of the 300-kilometre Rex Trend, which is also covered by the Duquet, Rex South and NCG properties (Figure 9). Since announcing the initial copper discovery at Rex (press release of October 13, 2010), Azimut has identified more than 20 other copper or polymetallic (copper-gold-silver-cobalt-tungsten) prospects. Drilling results, supported by prospecting, geological, structural and geochemical data, have confirmed several multi-kilometre IOCG-type targets. Azimut is also investigating the potential for other mineralization types, including diamonds. The main zones and target types are summarized below.

Mineralized zones

The two main zones on the Rex Property, RBL and CM, were discovered during Azimut's initial exploration program in 2010 (Figure 10).

The **RBL Zone** is at least 3 kilometres long by 50 to 200 metres wide, with a maximum grade to date of 11.3% Cu (grab sample). The preliminary 2011 drilling program (1,764 m in 23 short holes: 21 rotary, 2 RC) yielded the following best grades: 0.34% Cu over 4.58 m, 0.13% Cu over 9.14 m, 0.14% Cu over 13.72 m, 0.64% Cu over 1.52 m and 0.17% Cu over 6.10 m (press release of February 9, 2012). An envelope of mineralization and alteration is recognizable over the entire zone, and the drilling program revealed that copper values are frequently associated with anomalous values of cobalt and tungsten in a wide (up to 200 m) envelope containing anomalous barium, manganese, phosphorus and iron.

The **CM Zone** measures at least 2.5 kilometres long by 50 to 100 metres wide with a maximum grade to date of 4.3% Cu (grab sample; press release of October 13, 2010). An envelope of mineralization and alteration is recognizable over the entire zone at surface, and the 2011 drilling program (408 m in 6 short holes: 5 rotary, 1 RC) revealed a strong alteration system 150 metres wide, containing anomalous copper, cobalt, tungsten, molybdenum, barium, manganese, phosphorous and iron values (press release of February 9, 2012).

The mineralization of both zones is present as breccias hosted by migmatitic gneisses. The breccias contain chalcopyrite, bornite and pyrite (± covellite) and networks of magnetite and/or hematite with or without quartz veins/veinlets. Alteration is dominated by strong potassic alteration and pervasive silicification locally accompanied by albite, chlorite and epidote. Anomalous values in gold (up to 0.16 g/t Au at RBL), silver (up to 5.0 g/t Ag at RBL and up to 9.0 g/t Ag at CM) and cobalt (up to 1,130 ppm Co) were announced for surface grab samples collected during the 2010 program (press release of October 13, 2010).

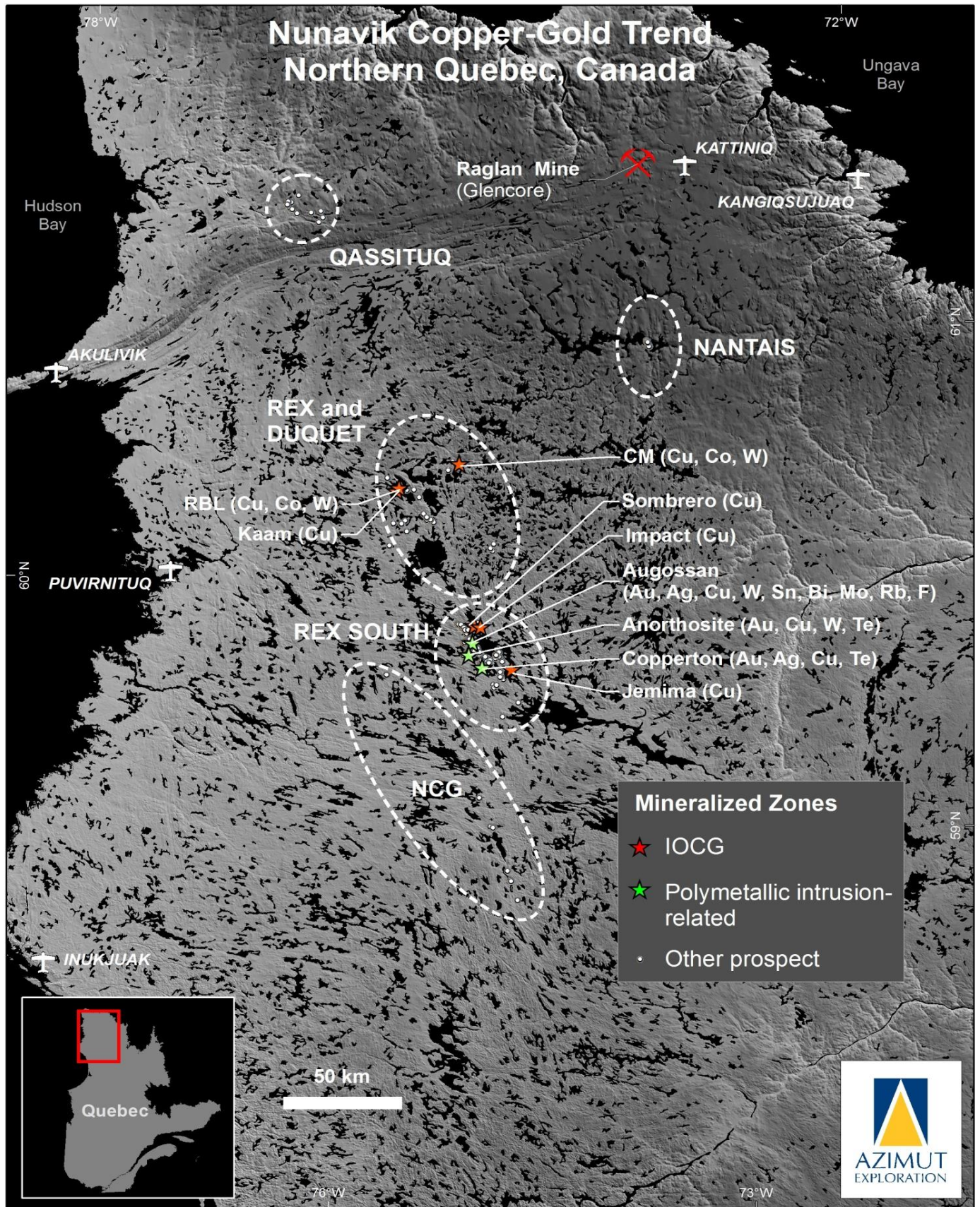


Figure 9: Location of Azimut’s wholly-owned properties in Nunavik. The Rex Trend comprises the Rex, Duquet, Rex South and NCG properties.

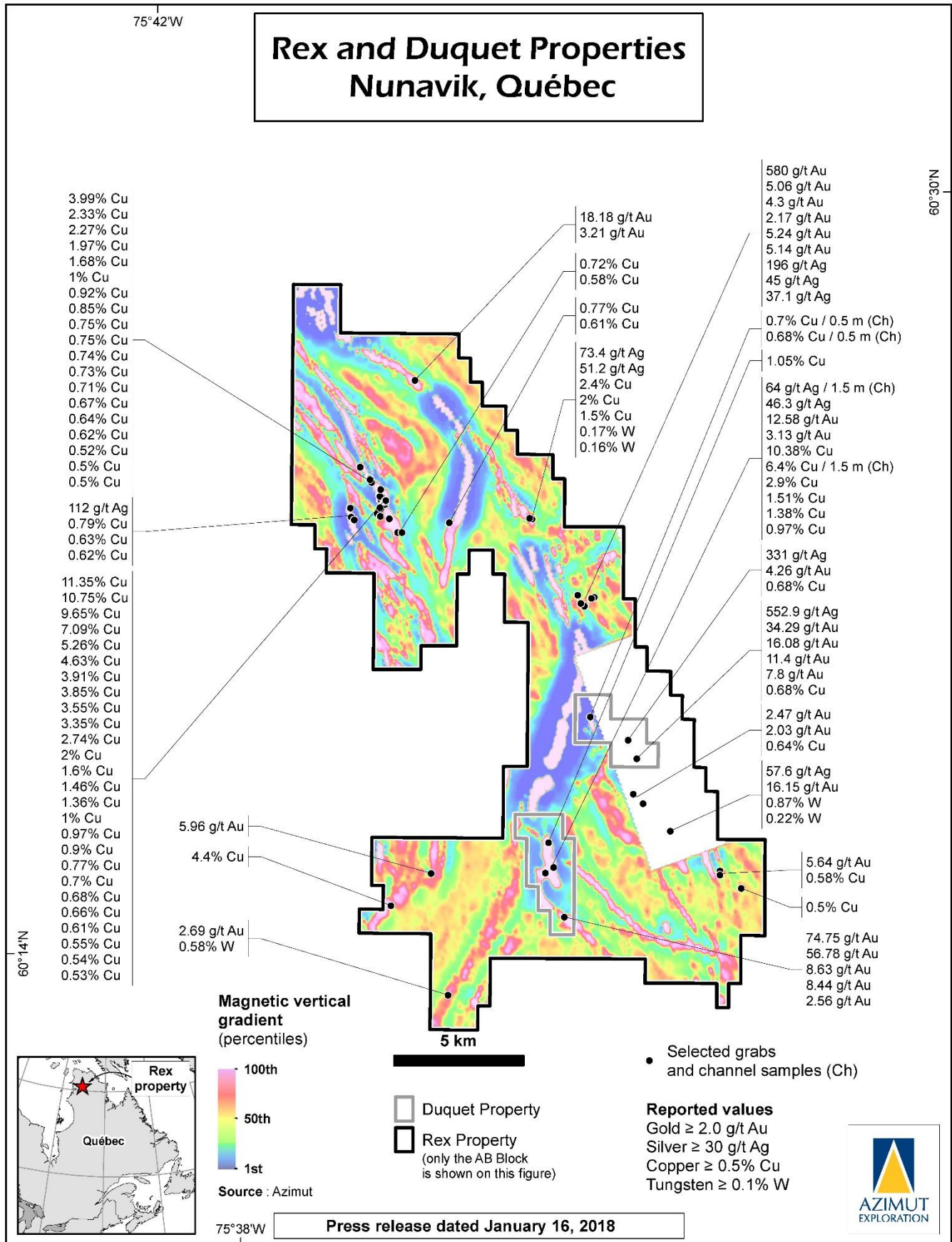


Figure 10: Rex and Duquet properties. Note: this figure only shows the AB Block of the Rex Property.

The geological context of the RBL and CM zones (large alteration and breccia systems spatially associated with regional-scale structures) suggest significant depth to the systems, and both zones show excellent potential for extensions based on their strong magnetic signatures and geochemical footprints in lake-bottom sediments. Azimut considers them to be significant IOCG-type targets. Furthermore, the two zones, spaced 27 kilometres apart, demonstrate the regional scale of mineralization on the Rex Property.

A number of other prospects on the Rex Property, several of them kilometre-scale, have also yielded significant grades for copper (up to 4.4% Cu), gold (up to 16.2 g/t Au and 580.0 g/t Au), silver (up to 196.0 g/t Ag), tungsten (up to 0.87% W), molybdenum (up to 0.65% Mo), rhenium (up to 0.91 g/t Re) and bismuth (up to 285 ppm Bi) (press releases of February 9, 2012 and October 12, 2010). In addition, results in the southern part of Rex revealed a 4-kilometre trend defined by anomalous barium values (up to 11.95% Ba) within a strong, 13-kilometre copper-molybdenum-cobalt-REE-manganese footprint in lake-bottom sediments. This area represents a top-priority IOCG target.

Mineral potential assessment

Azimut's management is of the opinion that the Rex Property has the potential to become an important metal district in Northern Quebec. Field work and analytical results to date validate Azimut's assessment of the Rex Property as highly prospective for IOCG-type deposits. The IOCG deposit-type encompasses a wide spectrum of ore bodies, often polymetallic and of significant size, which may notably produce iron, copper, gold, uranium, silver, cobalt and REE. The best known IOCG example is Olympic Dam in Western Australia, one of the largest known deposits in the world. Other prospective zones on the Rex Property may be related to deposit types typical of Archean greenstone belts, such as copper-gold mineralization in shear zones and volcanogenic massive sulphides. In addition, the 2010–2011 programs revealed strong exploration potential for diamonds. The ongoing assessment takes into account the results of an infill multi-element lake-bottom sediment program, a detailed aeromagnetic survey, a structural interpretation, and prospecting work on for newly discovered ultramafic intrusive rocks and carbonatite dykes (press release of February 9, 2012). The Rex, Duquet, Rex South and NCG properties cover a deep-seated structural corridor (the "Allemand-Tasiat Zone"), which has been recognized as prospective for diamonds by the Ministère de l'Énergie et des Ressources Naturelles (the "MERN").

Exploration work

The 2011 exploration program was part of Azimut's self-funded \$3.9-million combined exploration program for the Rex and NCG properties. The program comprised the following: ground-based geophysical surveys (49.2 line-km of IP and 122.3 km of magnetics) to better define drilling targets on the RBL and CM zones; infill lake-bottom sediment sampling (614 samples) to further define targets in the western part of the project; 1,116 grab rock samples from outcrops and boulders during property-wide prospecting; and 2,172 metres of reconnaissance drilling. The drilling program consisted of 29 short holes (2,113 m in 26 rotary holes, and 59 m in 3 RC holes) from which 1,382 drill samples were sent for analysis. Results were published in the press release of February 9, 2012.

In 2012, Azimut's self-funded \$765,000 Nunavik program, which included the Rex Property, was designed to increase the sampling density on known quality mineralized zones, and to conduct reconnaissance prospecting on newly defined targets. A total of 175 rock grab samples were collected on the Rex Property.

For Q1 2018, Azimut incurred \$100 (\$Nil – Q1 2017) in claim renewals and \$600 (\$3,000 – Q1 2017) in exploration work for technical evaluation and data interpretation. Azimut might pursue its assessment of the Rex project in 2018 on its own if financial conditions are adequate or through partnership.

Duquet Property (gold-silver-copper)

In 2015, Azimut acquired the Duquet Property (30 claims, 12.8 km²; 2 blocks; see Figure 10) from joint owners Osisko Gold Royalties Ltd (through the wholly-owned subsidiary Osisko Exploration James Bay Inc.), Newmont Northern Mining ULC and SOQUEM (press release of October 7, 2015). All the rights, titles and interests in the Duquet Property were transferred to Azimut in consideration of an aggregate 2.25% net smelter return royalty ("NSR") on the Property, with a 0.75% NSR granted to each of the three previous joint owners.

The Duquet Property is entirely positioned within the Rex Property (see Figure 11), together forming the northern segment of the Rex Trend. The Duquet Property hosts significant gold and copper mineralization, including the following historical grab and channel results:

- Gold: 74.75 g/t Au, 56.78 g/t Au, 34.29 g/t Au, 16.08 g/t Au, 12.58 g/t Au and 11.4 g/t Au (grabs)
- Silver: 552.9 g/t Ag and 331 g/t Ag (grabs), and 64 g/t Ag over 1.5 m (channel)
- Copper: 10.38% Cu, 2.9% Cu and 1.51% Cu (grabs), and 6.4% Cu over 1.5 m (channel)

The Duquet Property adds excellent prospects on strike with known major targets on the Rex Property, and provides a more complete coverage of the strong regional-scale lake-bottom sediment copper and REE anomaly that is the target of the Rex Property.

For Q1 2018, Azimut did not incur any claim renewal expenditures (\$3,000 – Q1 2017) or exploration expenditures (\$Nil – Q1 2017).

Rex South Property (copper-gold- tungsten)

The wholly-owned polymetallic Rex South Property (1,283 claims, 558.4 km²) occupies the middle segment of the 300-kilometre Rex Trend (Figure 9).

Exploration programs

In 2012, Azimut completed a self-financed \$360,000 exploration program in Nunavik that included infill grab sampling on two large zones of the Rex South Property. Results were published in press releases dated September 13, 2012 and October 4, 2012 (see below for details). In 2011, Azimut’s former partner Aurizon Mines Ltd operated a jointly designed comprehensive exploration program to follow up on the results of Azimut’s 2010 program comprising property-wide airborne geophysics (5,410 line-km), a detailed lake-bottom sediment geochemical survey (765 samples) and prospecting. The 2011 program consisted of ground-based geophysical surveys (53.9 line-km of IP and 149.5 km of magnetics), 257 infill lake-bottom sediment samples, 2,530 prospecting samples, 145.35 metres of channel samples (149 samples from 16 channels) and 4,934 metres of drilling in 53 holes on two zones (4,467 m of rotary and 467 m of RC; total of 3,171 samples). Results were published in press releases dated October 31, 2011 and April 4, 2012 (see below for details).

Mineralized zones

The above work yielded more than 30 new mineralized zones and prospects on Rex South (Figure 11). The most important are discussed below.

The **Augossan Zone** (gold-silver-copper-tungsten-tin) represents the first reported occurrence of significant tungsten grades in the Nunavik region. Other commodities of interest are bismuth, tantalum, beryllium, rubidium, molybdenum, rhenium, tellurium and lithium.

The Augossan Zone represents a large polymetallic envelope at the contact between a fluorite-topaz-bearing granitic intrusion (the **Qalluviartuuq Intrusive Complex**) and volcano-sedimentary rocks. It is 7,000 metres long and 100 to 350 metres wide, as defined by drilling, channelling and prospecting data. It remains open in all directions, notably toward the intrusion.

The best grades among 78 grab samples collected in 2012, mostly from outcrops, are as follows:

| Copper (%) | Tungsten (%) | Gold (g/t) | Silver (g/t) | Sample # |
|-------------------|---------------------|-------------------|---------------------|-----------------|
| 0.84 | 1.03 | - | 31.4 | L253840 |
| 1.71 | 0.02 | 1.3 | 17.9 | L253842 |
| 1.27 | 0.18 | - | 45.1 | L253839 |
| 0.37 | 0.21 | 0.6 | 62.3 | L253836 |
| 0.09 | 1.35 | 0.4 | - | L253803 |
| 1.08 | 0.02 | 0.6 | 9.0 | L253849 |

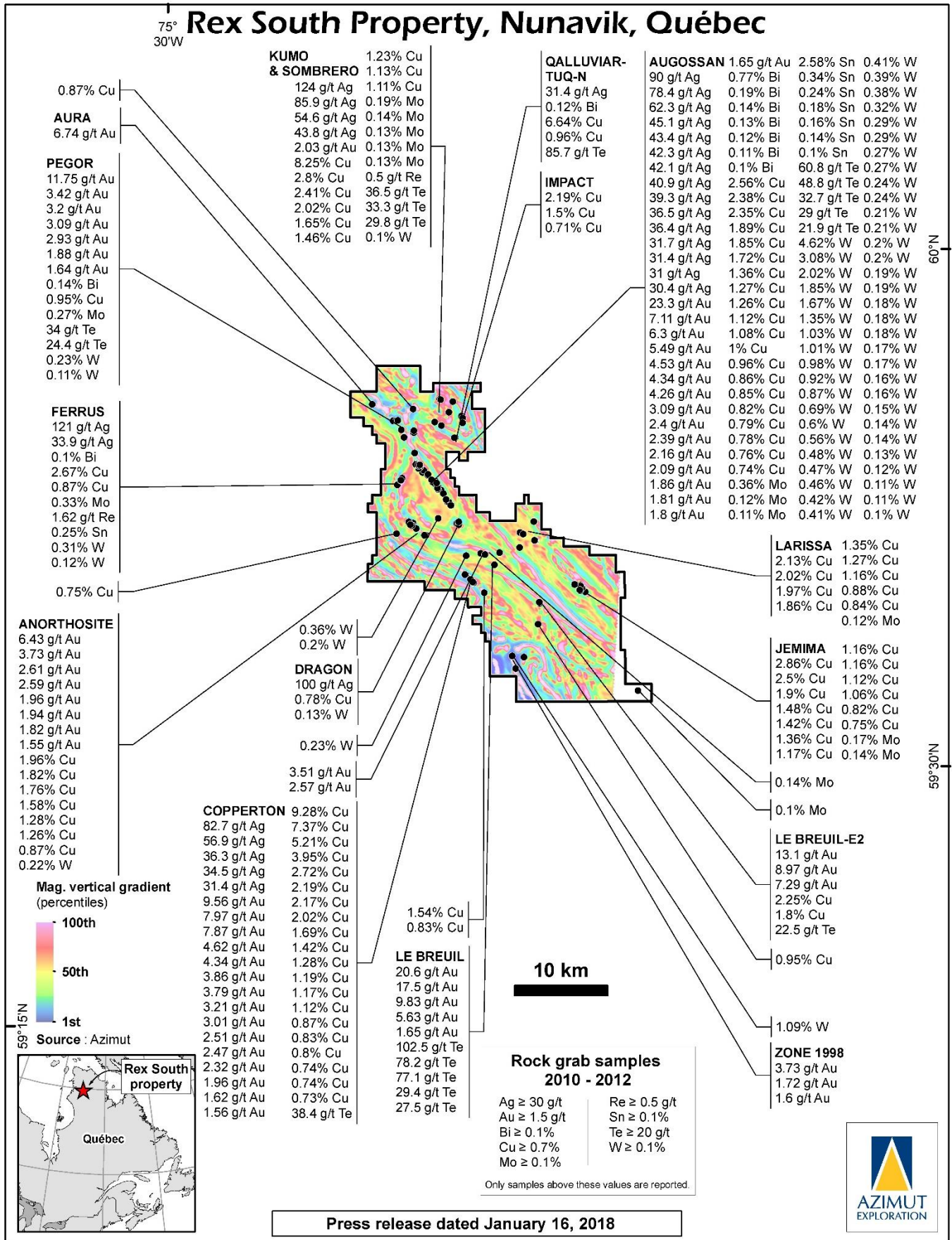


Figure 11: Main mineralized zones on the wholly-owned Rex South polymetallic (Cu-Au-W) property.

The results for the 788 grab samples collected from this zone from 2010 to 2012 can be summarized as follows:

- Copper: 136 samples returned grades higher than 0.1% Cu, including 25 samples with grades ranging from 0.5% to 2.56% Cu
- Tungsten: 71 samples returned grades higher than 0.05% W, including 49 samples with grades ranging from 0.1% to 4.62% W
- Gold: 141 samples returned grades higher than 0.1 g/t Au, including 28 samples with grades ranging from 1.0 g/t to 23.3 g/t Au
- Silver: 209 samples returned grades higher than 1.0 g/t Ag, including 49 samples with grades ranging from 10.0 g/t to 90.0 g/t Ag

Channel sampling highlights from 2011 included the following: 13.75 g/t Au, 15.8 g/t Ag and 0.23% Cu over 1.1 m; 3.15% W over 1 m; and 0.64% W over 3 m. Channels were cut at 90° to the apparent orientation of mineralization.

Drilling highlights from 2011 include the following: 0.14% W over 15.24 m with an interval of 4.20 g/t Ag, 893 ppm Bi, 0.12% W, 0.35% Cu over 7.62 m; 1.28 g/t Au, 8.41 g/t Ag, 0.12% Cu over 6.1 m; 1.10 g/t Au, 2.60 g/t Ag over 9.14 m; 0.56% W, 2.84 g/t Ag, 0.11% Cu over 1.52 m. True widths of the drilling intervals were estimated to be approximately 75% to 100% of core length.

The gold-copper-tungsten **Anorthosite Zone** was discovered in 2010 several kilometres south of the Augossan Zone. A few reconnaissance holes and prospecting data outlined a preliminary envelope 4 kilometres long by 200 metres wide with Au, Ag, Cu, W and Te mineralization.

The **Copperton Zone**, discovered about 5 kilometres southeast of the Anorthosite Zone, is 3,500 metres long by 20 to 100 metres wide. The zone's characteristic chalcopyrite and pyrite mineralization occurs as disseminations, veinlets and massive sulphide lenses hosted in a variably sheared, steeply dipping feldspathic intrusion, as well as amphibolites and gneissic metasediments. Results from the 2012 infill sampling program revealed consistent copper-gold-silver grades within the known envelope. The best grades among the 218 grab samples are as follows:

| Copper (%) | Gold (g/t) | Silver (g/t) | Sample # |
|------------|------------|--------------|----------|
| 7.37 | 3.86 | 56.9 | L253563 |
| 2.17 | 9.56 | 31.4 | L253585 |
| 1.19 | 1.96 | 11.5 | L253742 |
| 0.74 | 4.62 | 4.46 | L253549 |

The results for all 273 samples collected from Copperton Zone in 2011 and 2012 can be summarized as follows:

- Copper: 91 samples returned grades higher than 0.1% Cu, including 32 samples ranging from 0.5% to 9.28% Cu
- Gold: 89 samples returned grades higher than 0.1 g/t Au, including 19 samples ranging from 1.0 g/t to 9.56 g/t Au
- Silver: 77 samples returned grades higher than 1.0 g/t Ag, including 14 samples ranging from 10.0 g/t to 82.7 g/t Ag

Several samples returned significant tellurium (up to 38.4 g/t Te) and cobalt values (up to 500 ppm Co).

The **Aura-Pegor Zone**, 2 kilometres long, is characterized by disseminated pyrite and strong alteration, including tourmaline in veinlets or stockworks accompanied by silica and albite. Grab sample assays include 15 samples with grades ranging from 0.5 g/t Au to 11.75 g/t Au. In addition, this zone presents anomalous values in copper (up to 0.37% Cu), tungsten (up to 0.06% W), bismuth (up to 0.14% Bi) and tellurium (up to 34 g/t Te).

The **Jemima Zone** forms a mineralized corridor 2 kilometres long by 30 to 100 metres wide, characterized by disseminated to semi-massive chalcopyrite and bornite associated with hematite-magnetite in veins, veinlets or as breccia cement, accompanied by strong pervasive potassic alteration, silica, chlorite and epidote. Mineralization and

associated alteration are related to a brittle structure that clearly crosscuts the Archean gneissic country rocks. Assays for 15 grab samples ranged from 0.5% to 2.86% copper, up to 0.17% molybdenum and up to 0.422 g/t rhenium.

Evidence of large-scale systems and comparison to other mineral provinces

Overall, the Rex South Property demonstrates evidence for two types of district-scale mineralized systems:

1. A system mainly emplaced around the ovoid-shaped, fluorite-topaz-bearing Qalluviartuuq Intrusive Complex measuring 15 kilometres by 5 kilometres. This includes the Augossan, Anorthosite and Copperton zones, and the Pegor, Ferrus, Dragon and Le Breuil prospects. Considerable additional exploration potential exists along the 30-kilometre contact between the intrusion and the volcano-sedimentary host rocks, as well as within the intrusion itself. This 30-kilometre prospective trend is marked by a linear magnetic anomaly around the intrusion. The Aura-Pegor and Le Breuil zones, both characterized by abundant tourmaline and lesser fluorite, may represent a less eroded part of the system (possible roof zones) along the northwest and southeast extensions of the Augossan trend.
2. IOCG mineralization associated with brittle structures and characterized by copper-dominant values accompanied by hematite and pervasive potassic alteration, represented by the Jemima Zone and the Sombrero and Impact prospects. The Larissa, Agaku-1, Agaku-2, Agaku-4 prospects may also represent IOCG mineralization.

A comparison can be made between the context of the Rex Trend and the world-class Carajás Mineral Province in Brazil. The latter hosts several large IOCG deposits (Sossego, Salobo, Alemao, Gameleira and Cristalino) and intrusion-related Cu-Au-(W-Bi-Sn) and W deposits (Breves, Aguas Claras) associated with anorogenic granite intrusions. The ages for the Carajás IOCG deposits range from Archean (2.77 Ga) to Paleoproterozoic (1.73 Ga), and the intrusion-related Breves deposit is Paleoproterozoic (1.88 Ga). The Breves deposit (50 Mt @ 1.22% Cu, 0.75 g/t Au, 2.4 g/t Ag, 0.12% W, 70 ppm Sn, 175 ppm Mo, and 75 ppm Bi) has a number of features in common with the Qalluviartuuq mineralized system at Rex South, particularly the presence of fluorite, tourmaline, chalcopyrite, pyrite, arsenopyrite, wolframite, cassiterite, bismuthinite and native bismuth.

For Q1 2018, Azimut did not incur any claim renewal expenditures (\$5,000 – Q1 2017) , but did incur \$1,900 (\$3,000 – Q1 2017) in exploration work for technical evaluation and data interpretation. The assessment of the project requires follow-up airborne geophysics, prospecting, drilling on previous drill intersections and new targets, with particular focus on the Copperton, Augossan and Jemima zones. Azimut might pursue its assessment of the Rex South Property in 2018 on its own if financial conditions are adequate or through partnership.

NCG Property (copper-gold)

The NCG Property (1 claim; 0.4 km²) forms the southern end of the Rex Trend. Several attractive targets with comparable footprints to mineralized zones on Rex and Rex South were the focus of an intense field reconnaissance program in 2011 and a smaller program in 2012. The property-wide 2011 program produced 2,584 infill lake-bottom sediment samples and 746 rock grab samples, mostly from outcrops or slightly displaced boulders (press release of May 8, 2012). Azimut's self-funded \$360,000 program in 2012 was designed to increase the sampling density on already known quality mineralized zones and to conduct reconnaissance prospecting on newly defined targets.

For Q1 2018, Azimut did not incur any claim renewal expenditures (\$Nil – Q1 2017) or exploration expenditures (\$Nil – Q1 2017). The claim is still in good standing, but the NCG Property was fully impaired because Azimut elected to no longer pursue its assessment of the project due to weak commodity markets and the absence of a partner to option the property.

Qassituq Property

In 2012, Azimut acquired the copper-gold Qassituq Property in Northern Nunavik based on the Company's systematic data processing of the region (press release of January 17, 2013). The wholly-owned property (33 claims, 13.59 km²) lies to the north of the Cape Smith Belt at a distance of 85 kilometres from Salluit, an Inuit village on the Arctic Ocean, and 145 kilometres west of Glencore's world-class Raglan nickel mine (see Figure 9).

The Qassituq Property displays very strong lake-bottom sediment anomalies, most notably arsenic and/or copper. It contains several historical mineralized prospects with grab sample grades up to 4.13% Cu and 2.94 g/t Au. Qassituq also displays a strong potential for platinum group elements (PGE) related to its ultramafic lithologies. A historical diamond drill hole intersected 0.75 g/t Pd, 0.29 g/t Pt and 0.18 g/t Au over 15 m (Hole H-8-97).

For Q1 2018, Azimut incurred \$3,800 (\$Nil – Q1 2017) in claim renewals and \$100 (\$Nil – Q1 2017) in exploration expenditures. Azimut might pursue its assessment of the Qassituq Property in 2018 on its own if financial conditions are adequate, or through partnership.

NUNAVIK – GOLD

Nantais Property

The wholly-owned Nantais gold property (286 claims; 119.7 km²) lies about 80 kilometres south of Glencore’s Raglan nickel mine and 115 kilometres southwest of the Inuit village of Kangiqsujaq (see Figure 9). Azimut conducted prospecting programs in 2011 and 2012, yielding 152 grab samples and the discovery of two new gold prospects: 16.7 g/t Au from an outcrop sample and 26.1 g/t Au from a near-source boulder (press release of April 19, 2012; Figure 12). To date, mineralization has been recognized along a 3-kilometre prospective trend, open in all directions, which includes three historical prospects. Mineralization is hosted within a steeply dipping north-trending unit of mafic and felsic volcanic rocks belonging to the Nantais Complex of the Minto Block, a geological division of the Archean Superior Province. The results and geological context indicate an excellent potential for gold-rich polymetallic volcanogenic massive sulphide deposits.

The best results are as follows (press release of September 18, 2012):

| Gold (g/t) | Silver (g/t) | Copper (%) | Sample # |
|-------------------|---------------------|-------------------|-----------------|
| 15.15 | 31.30 | 0.86 | J351726 |
| 15.50 | 4.53 | 0.10 | J351722 |
| 9.98 | 9.26 | 0.06 | J351723 |
| 2.21 | 66.10 | 0.80 | J351728 |
| 1.83 | 41.50 | 0.45 | J351717 |

Many samples also returned anomalous zinc (up to 2.26% Zn) and lead values (up to 1.29% Pb). The results for all 152 samples collected from the Nantais Property in 2011 and 2012 can be summarized as follows:

- Gold: 31 samples returned grades higher than 0.1 g/t Au, including 14 samples ranging from 1.0 g/t to 26.10 g/t Au;
- Silver: 93 samples returned grades higher than 1.0 g/t Ag, including 15 samples ranging from 10.0 g/t to 99.30 g/t Ag; and
- Copper: 17 samples returned grades from 0.1% to 0.86% Cu.

In 2014, Azimut continued to assess the potential of the Nantais Property through a helicopter-borne VTEM-Plus time-domain electromagnetic survey and high-resolution magnetic survey covering 998 line-kilometres at a spacing of 200 metres. The objective was to advance the project to the drilling stage by delineating high-quality conductors superimposed on or along strike with known mineralized prospects and structures. Electromagnetic anomalies with a cumulative length of 18.4 kilometres have been identified on 23 distinct conductors. These include a number of conductors forming an envelope 1.2 kilometres long by up to 900 metres wide, coincident with a mineralized corridor 3 kilometres long and up to 200 metres wide, which was previously outlined by Azimut (press releases of August 27 and September 29, 2014).

For Q1 2018, Azimut did not incur any claim renewal expenditures (\$1,000 – Q1 2017), but did incur \$300 (\$1,000 – Q1 2017) in exploration work for technical evaluation and data interpretation.

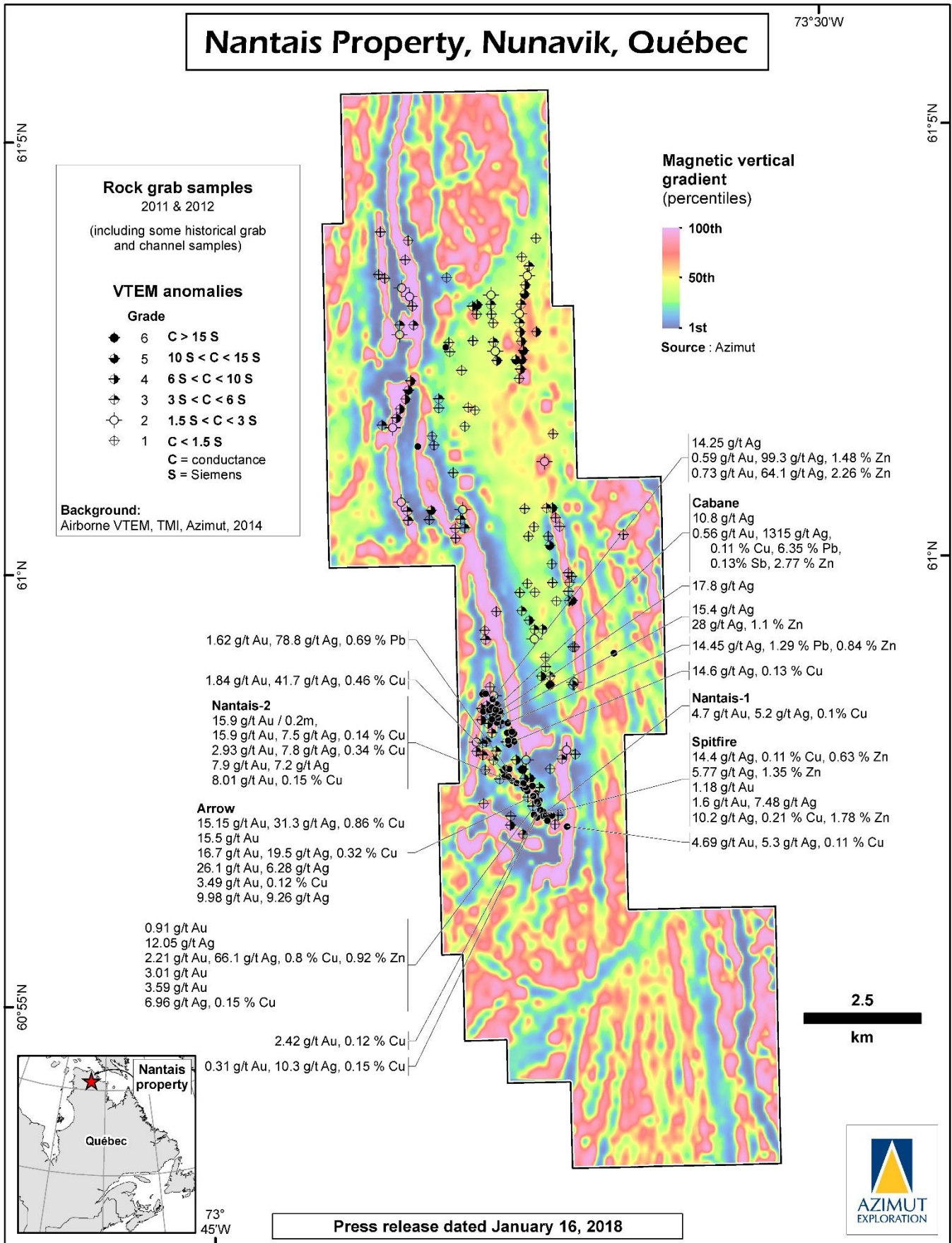


Figure 12: Map of the main mineralized zones (Au, Ag, Cu-Zn) on the Nantais Property.

NUNAVIK – URANIUM

North Rae Property

Azimut considers Nunavik to be highly prospective for large-tonnage uranium deposits related to intrusive rocks in high-grade metamorphic environments. Azimut's only uranium property in Nunavik, the North Rae Property (1 claim, 0.45 km²), is located in a part of the eastern Ungava Bay region that management considers to be a new uranium province in Canada. The major uranium company AREVA also has a land position in the same area.

The North Rae Property is located about 20 kilometres from the coastal town of Kangiqsualujjuaq and 160 kilometres northeast of the town of Kuujuaq. It covers uranium targets along the contact between the Proterozoic metasedimentary rocks of the Lake Harbour Group and the Archean granitized basement. The potential of the North Rae Property is based on its geochemical signature, the association with anatectic granites and the spatial relationship with deep-seated structures. On the nearby Cage Property, AREVA drilled more than 10,000 metres in 2009 and reported 14 mineralized zones with grades up to 9.34% U₃O₈, mostly hosted in metasedimentary rocks of the Lake Harbour Group, which it called "an important uranium-thorium province" in a report filed in 2007.

The exploration model is a large-tonnage, disseminated uranium deposit hosted by an intrusion and its country rocks. A well-known example of this type is Rössing in Namibia, one of the world's largest uranium mines. Proximal secondary concentrations along late syn-intrusive to post-intrusive brittle or ductile-brittle faults are also considered. North Rae shares strong similarities with the footprints of several major uranium sites in Quebec, and with the neighbouring Central Mineral Belt in Labrador, a well-known prospective region for uranium.

From 2006 to 2009, a dozen mineralized zones were discovered at surface on the North Rae Property and in its vicinity (former properties held by Azimut), with a cumulative length of 17 kilometres and grades up to 3.3% U₃O₈. The zones show excellent spatial correlation with uranium anomalies identified by geophysical surveys flown over the North Rae Property and other former adjacent properties. Many targets have yet to be field-tested, and many mineralized zones remain open. No major work has been conducted on the North Rae Property since 2009 given the volatility of the uranium market, the major nuclear incident at Fukushima in March 2011, and the current uncertainty regarding the development of uranium projects in Quebec.

The North Rae uranium project benefits from several strategic advantages, notably the potential for a large and shallow resource base amenable to open pit mining, and the short distance to port facilities on the Ungava Bay coast, which are near deep sea water, a permanent airport and other infrastructure.

For Q1 2018, Azimut did not incur any claim renewal expenditures (\$200 – Q1 2017) or any exploration expenditures (\$Nil – Q1 2017). The North Rae Property was fully impaired because no E&E expenditures were planned due to the uncertainty surrounding the uranium industry in Quebec.

REGIONAL MODELLING AND PROJECT GENERATION

Azimut continues to pursue its mineral potential modelling of several regions in Quebec with the objective of generating new projects, most notably for gold and copper. Opportunities in other regions and for other commodities are also considered.

PERSPECTIVE

The following table presents the status of the current work programs on Azimut's properties and the planned exploration programs for 2018.

Azimut maintains its conservative business approach by minimizing equity dilution and preserving its cash position, especially in the current context of the mining industry. Azimut's strategy is to focus on developing new partnerships in Quebec in order to safeguard the value added to Azimut's projects. The Company also continues to assess quality exploration opportunities based on its systematic data processing approach.

The Company is maintaining its long-standing exploration focus in the James Bay region, primarily with its gold properties in the Opinaca Reservoir (Eleonore Gold Camp) and Eastmain River areas. The Company also continues

to hold a commanding position over the Rex Trend, the 300-kilometre-long mineral belt in Nunavik containing major gold-polymetallic targets.

Management believes the Company has adequate financial resources to keep its properties in good standing and to pay its ongoing general and administrative expenses.

| JAMES BAY REGION | | |
|----------------------------------|----------------------------------|---|
| Property | Status | 2018 planned work programs |
| Opinaca A (gold) | Targets identified | Drilling stage 50% funding: Till sampling program |
| Opinaca B (gold) | Targets identified | Drilling stage Partner-funded program: Ground geophysics and drilling |
| Eleonore South (gold) | Targets identified | Drilling stage Program funded by the three-way JV: Prospecting, stripping and drilling |
| Opinaca D (gold) | Targets identified | Prospecting and till sampling |
| Wabamisk (gold) | Technical assessment underway | Drilling stage Partner-funded program to be defined |
| Eastmain West (chromium, PGE) | Targets identified | Prospecting, mechanical trenching and drilling |
| Munischawan (gold) | Technical assessment underway | Reconnaissance stage, prospecting Partner-funded program |
| Pikwa (gold) | Technical assessment underway | Reconnaissance stage, prospecting Partner-funded program |
| Pontois (gold) | Technical assessment underway | Reconnaissance stage, prospecting Partner-funded program |
| Desceliers (gold-copper) | Technical assessment underway | Reconnaissance stage, prospecting Partner-funded program |
| Valore (gold) | Technical assessment underway | Reconnaissance stage Till sampling and prospecting |

| NUNAVIK REGION | | |
|---|-----------------------------|--|
| Property | Status | 2018 planned work programs |
| Rex (copper, gold, silver, REE) | Priority targets identified | Programs may include airborne geophysics, prospecting, and drilling |
| Rex South (gold, silver, copper, tungsten) | Priority targets identified | These programs would be carried out within the framework of a new partnership |
| Nantais (gold, silver, copper, zinc) | Priority targets identified | Program may include prospecting, ground geophysics and drilling These programs would be carried out within the framework of a new partnership |
| Duquet (gold, silver, copper) | Reassessment in progress | To be determined |
| Qassituq (PGE, copper, gold) | Priority targets identified | To be determined |

SELECTED FINANCIAL INFORMATION

| | November 30, | |
|---|--------------|--------------|
| | 2017 (\$) | 2016 (\$) |
| Revenue | | |
| Management income | 52,140 | 51,689 |
| | | |
| Expenses | | |
| General and administrative | 73,322 | 370,026 |
| General exploration | 2,361 | 38,662 |
| Impairment of exploration and evaluation assets | - | 246 |
| Finance costs, net of interest income | (4,421) | (1,806) |
| | 71,262 | 407,128 |
| | | |
| Other gains | (116,497) | (109,838) |
| Net income (loss) for the period | 97,375 | (245,601) |
| Basic and diluted earning (loss) per share | 0.002 | (0.005) |

RESULTS OF OPERATIONS

Q1 2018 COMPARED TO Q1 2017

Azimut reported an income of \$97,000 for Q1 2018 compared to a loss of \$246,000 for Q1 2017². The variations are as detailed below.

Revenues

The Company reported a revenue of \$52,000 (\$52,000 for Q1 2017) in management income for the Company's role as operator of its joint venture properties, mainly for the Eleonore South Property (\$37,000) and the Azimut-SOQUEM Strategic Alliance properties (\$15,000).

Operating Expenses

General and administrative expenses amounted to \$73,000 in Q1 2018 compared to \$370,000 in Q1 2017. The increase in Q1 2018 is due mainly to the net effect of the following:

- No stock-based compensation costs for Q1 2018 (\$252,000 – Q1 2017, representing the fair value of 645,000 stock options granted and vested; this expense did not affect cash).
- A decrease in professional fees of \$4,000 due to less work required from external legal experts.
- A decrease in office expenses of \$2,000 for less repairs and maintenance of the computer system.
- A decrease in travel and entertainment expenses of \$32,000 reflecting less international travel for business development.

General exploration expenses were \$2,000 in Q1 2018 compared to \$39,000 in Q1 2017. The reduction is explained by no stock-based compensation costs in Q1 2018 (\$35,000 – Q1 2017, representing the fair value of 90,000 stock options granted and vested; this expense did not affect cash).

² For ease of reading and comparison, dollar amounts in this MD&A are rounded to the nearest thousand for amounts over \$1,000, and to the nearest hundred otherwise, except for equity prices and exercise prices. Refer to the 2017 annual financial statements for exact amounts.

Other gains and losses

The Company reported other gains of \$116,000 for Q1 2018 compared to \$110,000 for Q1 2017. The changes were primarily attributable to the net effect of the following:

- No gain (\$100,000 – Q1 2017) was recorded for the Target Report that identified gold targets based on a systematic mineral potential analysis of the James Bay region.
- A \$116,000 (\$10,000 – Q1 2017) change in the fair value of the Company's investments, which is mainly attributable to its investment in Nemaska Lithium Inc. and Captor Capital Corp. (formerly NWT Uranium Corp).

OTHER INFORMATION

| | November 30, | August 31, |
|-------------------------------------|--------------|-------------|
| | 2017 | 2017 |
| Cash and cash equivalents | \$2,004,145 | \$4,138,853 |
| Total assets | \$6,046,061 | \$7,680,499 |
| Shareholders' equity | \$4,742,058 | \$4,644,683 |
| Number of shares outstanding | 45,459,496 | 45,459,496 |
| Number of stock options outstanding | 3,390,000 | 3,390,000 |
| Number of warrants outstanding | 4,489,584 | 4,489,584 |

Since its incorporation, the Company has not declared cash dividends on its outstanding common shares. Any future dividend payment will depend on the Company's financial needs for its exploration programs and its future financial growth, and any other factor that the Board of Directors deems necessary to consider in the circumstances. It is unlikely that any dividends will be paid in the near future.

CASH FLOWS, LIQUIDITY AND CAPITAL RESOURCES

Azimut is currently in the exploration and evaluation stage and has not earned significant revenues.

Financial Position

The Company's working capital was \$1,904,000 as at November 30, 2017, compared to \$2,801,000 as at November 30, 2016. Management is of the opinion that the current cash position is sufficient to meet current commitments on a continuous basis for at least the next twelve (12) months. The Company decided to contribute to work expenditures on the Eleonore South Property and on several of its James Bay properties. To pursue its exploration programs and its operations beyond November 30, 2018, the Company will periodically need to raise additional funds through the issuance of new equity instruments and to sign option agreements with partners on its exploration and evaluation assets. While it has been successful in doing so in the past, there can be no assurance it will be able to do so in the future or that these sources of funding or initiatives will be available for the Company, or that they will be available on terms that are acceptable to the Company.

As at November 30, 2017, the cash and cash equivalent position was lower than at August 31, 2017, mainly due to cash used in operation and exploration work. Total assets were lower than at August 31, 2017, owing mainly to the net effect of the following: a decrease in the cash position; an increase in the tax credits and the commodity taxes receivable for the current period; an increase in investments, mainly for Nemaska Lithium Inc. and Captor Capital Corp.; and an increase in E&E costs incurred mainly on the Eleonore South Property. A decrease in liabilities is largely owing to advances received from joint venture partners that were applied to exploration work. The change in equity is mainly due to the net income for the period.

Operating activities

For Q1 2018, net cash flows used in operating activities totalled \$18,000 (compared to \$30,000 from operating activities in Q1 2017). The variation is mainly due to \$100,000 received in Q1 2017 from SOQUEM upon delivery of a Target Report identifying major gold targets in the James Bay region.

The net change in non-cash working capital amounted to \$198,000 (\$92,000 – Q1 2017). The net change is the result of an increase in amounts receivable of \$190,000 (commodity taxes receivable) and a decrease in accounts payable of \$10,000.

Financing activities

No cash flows were provided from financing activities in Q1 2018 or Q1 2017.

Investing activities

Investing activities consisted mainly of the addition to E&E assets. In Q1 2018, net cash flows from investing activities totalled \$1,919,000 compared to \$881,000 in Q1 2017. The variation is attributable to the net effect of the following:

- No cash calls received from joint venture partners in Q1 2018 (\$232,000 – Q1 2017) for the exploration work programs on the Eleonore South Property and the Azimut-SOQUEM Strategic Alliance properties (Munischivan, Pikwa, Pontois, Desceliers and the reconnaissance program on 7 properties)
- Additions to E&E assets for a total of \$1,986,000 (\$1,113,000 – Q1 2017). Significant costs were incurred on the Eleonore South Property and the Azimut-SOQUEM Strategic Alliance properties. An amount of \$1,038,000 was charged back to joint venture partners for the exploration work conducted on the joint venture properties (Eleonore South, Munischivan, Pikwa, Pontois, Desceliers, Corvet, Dalmas, Orsigny, Sauvolles, Synclinal and Galinée).

Advanced exploration on the Company's properties and the ongoing work to identify early-stage and major exploration targets are pursuits that require substantial financial resources. In the past, the Company has been able to rely on its ability to raise financing in privately negotiated equity offerings. There is no assurance that the Company will be successful in raising additional funds in the future.

QUARTERLY INFORMATION

The information presented below details the total income (expenses), net earnings (loss), and net earnings (loss) per share for the last eight quarters. The information is based on the financial statements, which have been prepared in accordance with IFRS.

| Quarter ended | Income (expenses) \$ | Net earnings (loss) \$ | Net earnings (loss) per share | |
|---------------|----------------------------|------------------------------|----------------------------------|--------------|
| | | | Basic (\$) | Diluted (\$) |
| 31-11-2017 | 168,637 | *97,375 | 0.002 | 0.002 |
| 31-08-2017 | 35,990 | **** (1,613,478) | (0.035) | (0.035) |
| 31-05-2017 | 48,403 | (22,226) | (0.000) | (0.000) |
| 28-02-2017 | 14,809 | (79,394) | (0.002) | (0.002) |
| 30-11-2016 | 161,527 | **** (245,601) | (0.005) | (0.005) |
| 31-08-2016 | (58,294) | *** (308,835) | (0.008) | (0.008) |
| 31-05-2016 | 241,262 | *110,802 | 0.003 | 0.003 |
| 29-02-2016 | 7,524 | (64,380) | (0.002) | (0.002) |

* Gain arising from changes in fair value on investments.

** Due to the gain on option payments received.

*** Due to the impairment of E&E assets and property equipment.

**** Due to the impairment of E&E assets and to stock-based compensation.

CONTRACTUAL OBLIGATIONS

As at November 30, 2017, the Company's contractual obligation payments are as follows:

| | Less than 1 year | 1–3 years | 4–5 years | After 5 years |
|-------------------------------|-----------------------------|------------------|------------------|--------------------------|
| | \$ | \$ | \$ | \$ |
| Operating leases | 13,497 | - | - | - |
| Asset retirement obligations | <u>-</u> | <u>251,480</u> | <u>-</u> | <u>-</u> |
| Total contractual obligations | <u>13,497</u> | <u>251,480</u> | <u>-</u> | <u>-</u> |

OFF-BALANCE SHEET ARRANGEMENTS

The Company has no off-balance sheet arrangements.

CARRYING AMOUNT OF EXPLORATION AND EVALUATION (“E&E”) ASSETS

At the end of each quarter, management reviews the carrying value of its E&E assets to determine whether any write-offs or write-downs are necessary. Based on an impairment analysis performed in Q1 2018, no impairments were deemed necessary. In Q1 2017, the uranium property, North Rae, was fully impaired by \$200 due to uncertainty surrounding the uranium industry in Quebec.

The Company has sufficient funds to respect its short-term obligations. The estimation of impairment charges requires judgment from the management.

RELATED PARTY TRANSACTIONS

The related parties of the Company include key management and companies owned by the key management team. Key management includes directors, the chief executive officer (“CEO”), and the chief financial officer (“CFO”).

The compensation paid or payable to key management for services is as follows:

| | 2017 | 2016 |
|---------------------|---------------|----------------|
| | \$ | \$ |
| Salaries | 72,750 | 67,841 |
| Share-based payment | <u>-</u> | <u>284,430</u> |
| | <u>72,750</u> | <u>352,271</u> |

An amount for salaries of \$41,000 (\$27,000 – Q1 2017) was capitalized to E&E assets in Q1 2018.

As at November 30, 2017, accounts payable and accrued liabilities include an amount of \$36,000 (\$31,000 at November 30, 2016) owed to key management.

In the event that termination of employment is for reasons other than gross negligence, the CEO will be entitled to receive an indemnity equal to twelve (12) months of salary. The CFO will be entitled to receive an indemnity equal to twelve (12) weeks salary and after more than two (2) years of employment, the indemnity will be increased by one (1) month for every additional year of employment. In both cases, the indemnity is subject to a maximum indemnity period of twelve (12) months. The indemnity paid must not represent more than 10% of the Company's liquidities at such time.

In the event of a change of control or a termination of employment following a change of control, the CEO will be entitled to receive an indemnity equal to twenty-four (24) months of salary and the CFO will be entitled to receive an indemnity equal to eighteen (18) months of salary.

SUBSEQUENT EVENT

On December 28, 2017, the Company completed a non-brokered private placement of 3,100,000 flow-through shares at \$0.50 per share, for aggregate gross proceeds of \$1,550,000. No commissions or finder's fees will be paid in respect of the Offering.

SUMMARY OF SIGNIFICANT ACCOUNTING POLICIES

A detailed summary of the Company's significant accounting policies is provided in note 2 of the annual financial statements as at August 31, 2017.

NEW ACCOUNTING STANDARDS OR AMENDMENTS

A detailed summary of new accounting standards or amendments adopted in the current year or to be adopted in later years is provided in notes 2 and 3 of the annual financial statements as at August 31, 2017.

CRITICAL ACCOUNTING POLICIES AND ESTIMATES

A detailed summary of the Company's critical accounting policies and estimates is provided in note 4 of the annual financial statements as at August 31, 2017.

INFORMATION REGARDING OUTSTANDING SHARES

The Company can issue an unlimited number of common shares, without par value. As at January 19, 2018, there were 48,559,496 issued and outstanding shares and no shares were held in escrow. Also, as at January 19, 2018, 4,489,584 warrants were outstanding with an average exercise price of \$0.45, valid until July 22, 2018.

The Company maintained a stock option plan in which a maximum of 3,300,000 stock options may be granted. On September 15, 2016, the Company obtained all regulatory approvals to increase the number of common shares reserved for future issuance under its stock option plan by 1,244,000, for a total of 4,544,000 shares or approximately 9.99% of the Company's 45,449,496 common shares issued and outstanding as at August 29, 2016. All other terms of the stock option plan remain unchanged. The exercise price of the options is set at the closing price of the Company's shares on the TSX Venture Exchange the day before the grant date. The options have a maximum term of ten (10) years following the granting date; the options are granted fully vested, unless otherwise approved by the Board of Directors. As at January 19, 2018, a total of 3,390,000 stock options were outstanding and vested. Their exercise prices range from \$0.19 to \$1.25 and the expiry dates range from March 7, 2018 to October 7, 2026.

RISK RELATED TO FINANCIAL INSTRUMENTS

The Company has exposure to various financial risks, such as credit risk, liquidity risk and market risk from its use of financial instruments. A detailed summary is provided in note 19 of the annual financial statements as at August 31, 2017.

RISKS AND UNCERTAINTIES

There have been no significant changes in the risk factors and uncertainties that the Company is facing, as described in the Company's annual financial statements and Management's Discussion and Analysis for the fiscal year ended August 31, 2017.

OUTLOOK

In the coming fiscal year, the Company will continue on the second phase of drilling on the Eleonore South Property, follow up on the best mineralized sections and new targets following thorough data integration and interpretation. Also, the Company will conduct the technical assessment work on four (4) gold properties acquired in the framework of its Strategic Alliance with SOQUEM in the James Bay–Eeyou Istchee Territory of Quebec. The Company will continue its efforts to find new partners for the available properties, and it intends to develop new business opportunities to advance its big data approach in other regional and country-scale settings. Furthermore, based on industry trends and demand, the Company will also continue to pursue its mineral potential modelling of several regions in Quebec with the objective of generating new projects. Financing may be required for this purpose in the upcoming fiscal year.

ADDITIONAL INFORMATION AND CONTINUOUS DISCLOSURE

This Management's Discussion and Analysis report is dated January 19, 2018, and it was approved by the Board on January 25, 2018. The Company regularly discloses additional information through press releases and its financial statements on the SEDAR website (www.sedar.com).

CAUTION REGARDING FORWARD-LOOKING INFORMATION

This document contains forward-looking statements, which reflect the Company's current expectations regarding future events. To the extent that any statements in this document contain information that is not historical, the statements are essentially forward-looking and are often identified by words such as "anticipate", "expect", "estimate", "intend", "project", "plan" and "believe". The forward-looking statements involve risks, uncertainties, and other factors that could cause actual results to differ materially from those expressed or implied by such forward-looking statements. There are many factors that could cause such differences, particularly volatility and sensitivity to market metal prices, impact of change in foreign currency exchange rates and interest rates, imprecision in reserve estimates, environmental risks including increased regulatory burdens, unexpected geological conditions, adverse mining conditions, changes in government regulations and policies, including laws and policies, and failure to obtain necessary permits and approvals from government authorities, as well as other development and operating risks. Although the Company believes that the assumptions inherent in the forward-looking statements are reasonable, undue reliance should not be placed on these statements, which only apply as of the date of this document. The Company disclaims any intention or obligation to update or revise any forward-looking statement, whether as a result of new information, future events or otherwise, other than as required to do so by applicable securities laws.

(s) Jean-Marc Lulin

President and CEO

(s) Moniroth Lim

Chief Financial Officer

CORPORATE INFORMATION

Azimut Exploration Inc.

Board of Directors

Jean-Marc Lulin, P.Geo., PhD, Director (Montreal) ⁽¹⁾

Jean-Charles Potvin, MBA, B.Sc., Director (Toronto) ⁽¹⁾

Louis P. Salley, B.A., LL.B., Director (Vancouver)

Jacques Simoneau, Eng., PhD, Director (Montreal) ⁽¹⁾

⁽¹⁾ Member of the Audit Committee

Management

Jean-Marc Lulin, President and Chief Executive Officer

Moniroth Lim, Chief Financial Officer and Corporate Secretary

Legal Counsel

XploraMines S.A. (Montreal)

Auditors

PricewaterhouseCoopers LLP/s.r.l./s.e.n.c.r.l. (Montreal)

Transfer Agent

AST Trust Company Canada (formerly Canadian Stock Transfer Company Inc.) (Montreal)

Listing

TSX Venture

Symbol: AZM

Contact Information

Head Office

110, De la Barre Street

Suite 214

Longueuil, QC

Canada J4K 1A3

Tel.: 1 450 646-3015

Fax: 1 450 646-3045

E-mail: info@azimut-exploration.com

Website

www.azimut-exploration.com